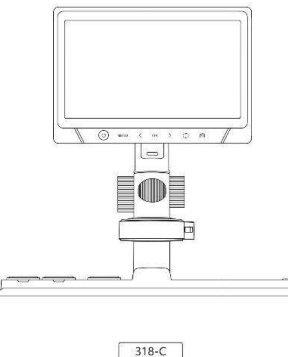


# DIGITAL MICROSCOPE



318-C

## PRODUCT DESCRIPTION

Thank you for purchasing this equipment, it is complex to use, so please read this manual in detail to understand how to operate the microscope before using it.

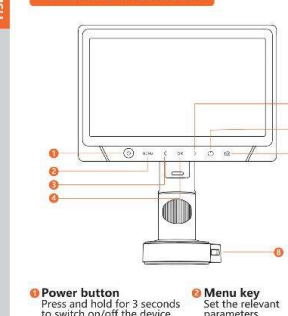
### IMPORTANT NOTES

1. Please fully charge the product before first use. Please do not charge directly through the PC, but choose a 5V-2A adapter.
2. In PC mode, this device only supports USB3.0 or above interface, not USB2.0 interface.
3. This product is not a biological microscope and is not suitable for cell biology research.
4. This equipment is equipped with a coaxial lens. Unlike traditional digital microscopes, it maintains clarity throughout the entire magnification range without the need for refocusing. Please read the instructions carefully before use.
5. This device cannot accurately read microscope magnification. It is a combination of digital and optical magnification microscope, the specific magnification effect is subject to the actual picture taken.
6. When the battery is low, both the storage mode and PC camera mode cannot be used normally. This is not a product failure.
7. Do not touch the lens or other optical parts with your hands, otherwise it will cause image blur and affect imaging quality.
8. Do not disassemble the product or component structure by yourself to avoid abnormal equipment use.

### BATTERY INSTRUCTIONS

1. Please use a safe and compliant 5V/2A home charger to charge this device.
2. This device supports charging while in use.
3. If the device is left unused for a long period of time, please ensure that it is charged at least once every 3 months to prevent irreparable damage caused by over-discharging the battery.

## FUNCTION INTRODUCTION



### RIGHT SELECTION KEY

Scroll down

## MODE SWITCH KEY

Short press to switch photo/video, file browsing mode / long press to switch different color display modes

### LED LIGHT SWITCH

Left for off, right for on

### RESET BUTTON

When the product crashes, press to force shutdown

### TF CARD SLOT

Support expansion 0-64G TF card

### CHARGING INDICATOR

When charging the red light is on, when it's done the green light is on

### CHARGING INTERFACE

Input 5V=2A

### LIGHT POWER SUPPLY PORT

Output 5V=1A

### LIGHT CHARGING PORT

Input 5V=1A

### BRIGHTNESS ADJUSTMENT

Left for dim, right for bright

### RIGHT SELECTION KEY

Confirm selection / screen flip

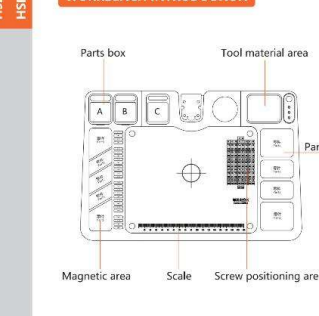
### MENU KEY

Set the relevant parameters

### OK KEY

Confirm selection / screen flip

## WORKBENCH INTRODUCTION



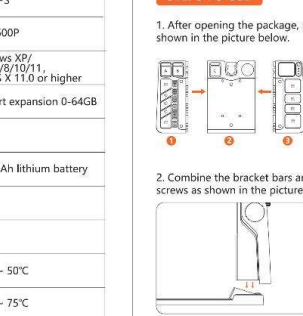
## PRODUCT SPECIFICATIONS

Lens pixels	12.0MP
Magnification	1600X
Focusing mode	Manual
Fixed focus distance	90mm
Video resolution	1920*1080P
Photo resolution	4032*3024P
Video format	MOV
Photo format	JPG

## OTHER

Screen size	10.1" IPS
Screen resolution	1024*600P
Operating systems	Windows XP/ Vista/7/8/10/11, MacOS X 11.0 or higher
TF capacity	Support expansion 0-64GB
Input voltage & current	5V/2A
Battery capacity	3000mAh Lithium battery
Operating time	1 hrs
Charging time	3 hrs
Operating temperature	-10°C ~ 50°C
Camera working temperature	-15°C ~ 75°C
Light source	30 high brightness LEDs (brightness adjustable)
Languages	Simplified Chinese / Traditional Chinese / Japanese / English / Korean / French / German / Spanish / Italian / Russian / Polish

## STEPS TO USE



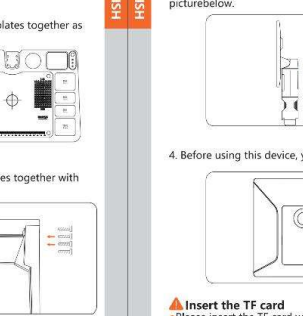
### INSERT THE TF CARD

Please insert the TF card when power off.

Please be careful not to mix the insertion direction and the front and back of the TF card.

Do not use excessive force when inserting or pulling out the TF card, otherwise the structure of the card slot may be damaged.

## FUNCTION BUTTON



### SETTING PAGE OPERATION INSTRUCTIONS

1. Double click the "MENU" key to enter the setting page.

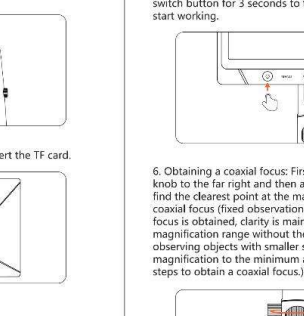
2. Click "←" "→" to select the required menu item.

3. Select the required item, click the "OK" key to enter, select "←" "→" the desired parameters with and then click the "OK" key to confirm.

4. When finish setting, Click the "←" "→" key to exit the setting mode.

5. The first time using the device, you need to go to "MENU" to select the required language (the factory setting of the device is: English).

## FILE BROWSING MODE OPERATION INSTRUCTIONS



### FILE BROWSING MODE OPERATION INSTRUCTIONS

1. Click "←" twice to enter the file browsing mode, you can view all the saved photos and videos. If you need to delete the current photo or video file, click "MENU" key to enter the delete page.

2. If the current file is in video format, click "OK" key for play/pause function, click left and right key for fast forward and fast rewind function.

## MODE INTRODUCTION

The product has three mode functions, which are as follows:  
 1. Memory mode: connect to PC, read, write and format TF card.  
 2. PC camera mode: Connect to a computer and use it through computer.  
 3. Normal mode: normal use mode of the device.

### MEMORY MODE

Connect the microscope to the computer via USB data cable, select memory mode, then click the OK button to view saved photos and videos on the computer.

### PC CAMERA MODE

Only supports USB3.0 or above interface, does not support USB2.0 interface

Note: When using PC mode.

1. some function keys will not be available.
2. In PC camera mode, it is normal that the device monitor will not display images.
3. When connected, if the software has no image, please repeat plugging and unplugging the Type-c data cable or replace the cable.

## WINDOWS SYSTEM

Support Windows vista/XP/7/8/10/11 or later.  
**I. Software Installation**  
 1. For WIN 7/8 systems, download and install the "AMCAP" software.  
 2. For IN 10/11 systems, search directly for the software "Windows Camera" (Note: Please disable the default laptop camera in Windows! And you must change the camera's privacy settings, which is needed to allow access).  
 3. Or download the application "Smart Camera" for your computer, download link: [www.inskam.com/download/camera.zip](http://www.inskam.com/download/camera.zip)  
 4. Connect your microscope to the USB port on the back of your computer case with the Type-C cable that comes with the microscope, press and hold the power button to turn on your computer, select to enter PC camera mode and open the computer software to use.  
 5. Different Windows systems are recommended to use different software, please choose to download the corresponding software to use according to the system.

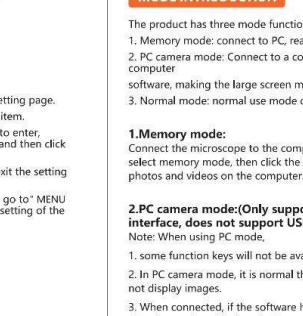
### MACOS SYSTEM

Support MacOS: MacOS X 11.0 or higher.  
**II. the software page display:**  
 1. Software "AMCAP" page, as follows.  
 2. "Windows Camera" page, as follows.  
 3. Software "Smart Camera" page, as follows.

## FAQ HELP

1. **The product cannot be switched on.**  
 Confirm whether the power is connected.  
 Confirm that the power supply is not sufficient due to the computer being used for charging.
2. **The product is dead.**  
 Press the device reset button to force shutdown.
3. **The image is not clear.**  
 Whether the object being measured is correctly positioned directly below the lens.  
 Whether the focal length is adjusted to the optimum position?  
 Whether the light is used correctly?
4. **Product charging.**  
 Please use 5V-2A adapter to charge the device.
5. **TF card cannot be recognized.**  
 Please make sure that the TF card format is FAT32. If not, please format it. If the device does not recognize the card, please reinsert it. The device only supports high-speed storage cards of Class 10 or above, not including Class 10.
6. **When using PC camera mode, the software does not show the picture after connecting to the computer.**  
 Reconnect the product to the computer.  
 Check if you clicked into PC mode.  
 Whether the battery is low.  
 Make sure that you are using the correct data cable and that you are not using a charging cable without data transfer function.

## COPYING PICTURE AND VIDEO FILES



### CHARGING GUIDE

Connect the device to the Type-C / USB adapter for charging (5V=2A), fast charging is not supported.

During charging, the indicator shows a red light.

When the device is fully charged, the indicator shows a green light.

When the battery is low, both memory mode and PC camera mode cannot be used normally, and the battery must be charged beyond the 1/3 position before it can be used again.

## WEEE COMPLIANCE

Proper disposal of this product (Waste Electrical and Electronic Equipment) (for countries with independent collection systems)  
 This marking on the product, accessories or literature indicates that the product and its electronic accessories should not be disposed of with other household waste at the end of their useful life.  
 To prevent uncontrolled waste disposal that may be hazardous to the environment or human health, please separate these items from other types of waste and recycle them responsibly to promote the sustainable reuse of material resources.  
 Household users should contact the retailer or local government office where they purchased this product for details of where they can take these items and how to recycle them in an environmentally friendly manner.  
 Business users should contact their suppliers and check the terms and conditions of their purchase contracts.  
 This product and its electronic accessories should not be mixed with other commercial waste for disposal.

## FCC STATEMENT

Any changes or modifications not expressly approved by the party responsible for compliance may void the user's authority to operate the equipment.  
 This equipment complies with Part 15 of the FCC Rules. Operation is subject to the following two conditions:  
 (1) This equipment will not cause harmful interference.  
 (2) This equipment must accept any interference received, including interference that may cause unintended operation.  
 FCC Radiation Exposure Statement  
 This equipment complies with the FCC radiation exposure limits established for uncontrolled environments.

### WEEE COMPLIANCE

Proper disposal of this product (Waste Electrical and Electronic Equipment) (for countries with independent collection systems)

This marking on the product, accessories or literature indicates that the product and its electronic accessories should not be disposed of with other household waste at the end of their useful life.

To prevent uncontrolled waste disposal that may be hazardous to the environment or human health, please separate these items from other types of waste and recycle them responsibly to promote the sustainable reuse of material resources.

Household users should contact the retailer or local government office where they purchased this product for details of where they can take these items and how to recycle them in an environmentally friendly manner.

Business users should contact their suppliers and check the terms and conditions of their purchase contracts.

This product and its electronic accessories should not be mixed with other commercial waste for disposal.

## PRODUCT DESCRIPTION

Thank you for purchasing this equipment, it is complex to use, so please read this manual in detail to understand how to operate the microscope before using it.

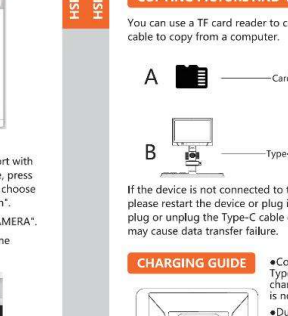
### IMPORTANT NOTES

1. Please fully charge the product before first use. Please do not charge directly through the PC, but choose a 5V-2A adapter.
2. In PC mode, this device only supports USB3.0 or above interface, not USB2.0 interface.
3. This product is not a biological microscope and is not suitable for cell biology research.
4. This equipment is equipped with a coaxial lens. Unlike traditional digital microscopes, it maintains clarity throughout the entire magnification range without the need for refocusing. Please read the instructions carefully before use.
5. This device cannot accurately read microscope magnification. It is a combination of digital and optical magnification microscope, the specific magnification effect is subject to the actual picture taken.
6. When the battery is low, both the storage mode and PC camera mode cannot be used normally. This is not a product failure.
7. Do not touch the lens or other optical parts with your hands, otherwise it will cause image blur and affect imaging quality.
8. Do not disassemble the product or component structure by yourself to avoid abnormal equipment use.

### BATTERY INSTRUCTIONS

1. Please use a safe and compliant 5V/2A home charger to charge this device.
2. This device supports charging while in use.
3. If the device is left unused for a long period of time, please ensure that it is charged at least once every 3 months to prevent irreparable damage caused by over-discharging the battery.

## FUNCTION INTRODUCTION



### RIGHT SELECTION KEY

Scroll down

### MODE SWITCH KEY

Short press to switch photo/video, file browsing mode / long press to switch different color display modes

### LED LIGHT SWITCH

Left for off, right for on

### RESET BUTTON

When the product crashes, press to force shutdown

### TF CARD SLOT

Support expansion 0-64G TF card

### CHARGING INDICATOR

When charging the red light is on, when it's done the green light is on

### CHARGING INTERFACE

Input 5V=2A

### LIGHT POWER SUPPLY PORT

Output 5V=1A

### LIGHT CHARGING PORT

Input 5V=1A

### BRIGHTNESS ADJUSTMENT

Left for dim, right for bright

### RIGHT SELECTION KEY

Confirm selection / screen flip

### MENU KEY

Set the relevant parameters

### OK KEY

Confirm selection / screen flip

## WORKBENCH INTRODUCTION



## PRODUCT SPECIFICATIONS

Lens pixels	12.0MP
Magnification	1600X
Focusing mode	Manual
Fixed focus distance	90mm
Video resolution	1920*1080P
Photo resolution	4032*3024P
Video format	MOV
Photo format	JPG

## OTHER

Screen size	10.1" IPS
Screen resolution	1024*600P
Operating systems	Windows XP/ Vista/7/8/10/11, MacOS X 11.0 or higher
TF capacity	Support expansion 0-64GB
Input voltage & current	5V/2A
Battery capacity	3000mAh Lithium battery
Operating time	1 hrs
Charging time	3 hrs
Operating temperature	-10°C ~ 50°C
Camera working temperature	-15°C ~ 75°C
Light source	30 high brightness LEDs (brightness adjustable)
Languages	Simplified Chinese / Traditional Chinese / Japanese / English / Korean / French / German / Spanish / Italian / Russian / Polish

## STEPS TO USE



### INSERT THE TF CARD

Please insert the TF card when power off.

Please be careful not to mix the insertion direction and the front and back of the TF card.

Do not use excessive force when inserting or pulling out the TF card, otherwise the structure of the card slot may be damaged.

## FUNCTION BUTTON



### SETTING PAGE OPERATION INSTRUCTIONS

1. Double click the "MENU" key to enter the setting page.

2. Click "←" "→" to select the required menu item.

3. Select the required item, click the "OK" key to enter, select "←" "→" the desired parameters with and then click the "OK" key to confirm.

4. When finish setting, Click the "←" "→" key to exit the setting mode.

5. The first time using the device, you need to go to "MENU" to select the required language (the factory setting of the device is: English).

### FILE BROWSING MODE OPERATION INSTRUCTIONS

1. Click "←" twice to enter the file browsing mode, you can view all the saved photos and videos. If you need to delete the current photo or video file, click "MENU" key to enter the delete page.

2. If the current file is in video format, click "OK" key for play/pause function, click left and right key for fast forward and fast rewind function.

## MODE INTRODUCTION

The product has three mode functions, which are as follows:  
 1. Memory mode: connect to PC, read, write and format TF card.  
 2. PC camera mode: Connect to a computer and use it through computer.  
 3. Normal mode: normal use mode of the device.

### MEMORY MODE

Connect the microscope to the computer via USB data cable, select memory mode, then click the OK button to view saved photos and videos on the computer.

### PC CAMERA MODE

Only supports USB3.0 or above interface, does not support USB2.0 interface

Note: When using PC mode.

1. some function keys will not be available.
2. In PC camera mode, it is normal that the device monitor will not display images.
3. When connected, if the software has no image, please repeat plugging and unplugging the Type-c data cable or replace the cable.

## WINDOWS SYSTEM

Support Windows vista/XP/7/8/10/11 or later.  
**I. Software Installation**  
 1. For WIN 7/8 systems, download and install the "AMCAP" software.  
 2. For IN 10/11 systems, search directly for the software "Windows Camera" (Note: Please disable the default laptop camera in Windows! And you must change the camera's privacy settings, which is needed to allow access).  
 3. Or download the application "Smart Camera" for your computer, download link: [www.inskam.com/download/camera.zip](http://www.inskam.com/download/camera.zip)  
 4. Connect your microscope to the USB port on the back of your computer case with the Type-C cable that comes with the microscope, press and hold the power button to turn on your computer, select to enter PC camera mode and open the computer software to use.  
 5. Different Windows systems are recommended to use different software, please choose to download the corresponding software to use according to the system.

### MACOS SYSTEM

Support MacOS: MacOS X 11.0 or higher.  
**II. the software page display:**  
 1. Software "AMCAP" page, as follows.  
 2. "Windows Camera" page, as follows.  
 3. Software "Smart Camera" page, as follows.

## FAQ HELP

1. **The product cannot be switched on.**  
 Confirm whether the power is connected.  
 Confirm that the power supply is not sufficient due to the computer being used for charging.
2. **The product is dead.**  
 Press the device reset button to force shutdown.
3. **The image is not clear.**  
 Whether the object being measured is correctly positioned directly below the lens.  
 Whether the focal length is adjusted to the optimum position?  
 Whether the light is used correctly?
4. **Product charging.**  
 Please use 5V-2A adapter to charge the device.
5. **TF card cannot be recognized.**  
 Please make sure that the TF card format is FAT32. If not, please format it. If the device does not recognize the card, please reinsert it. The device only supports high-speed storage cards of Class 10 or above, not including Class 10.
6. **When using PC camera mode, the software does not show the picture after connecting to the computer.**  
 Reconnect the product to the computer.  
 Check if you clicked into PC mode.  
 Whether the battery is low.  
 Make sure that you are using the correct data cable and that you are not using a charging cable without data transfer function.

## COPYING PICTURE AND VIDEO FILES



### CHARGING GUIDE

Connect the device to the Type-C / USB adapter for charging (5V=2A), fast charging is not supported.

During charging, the indicator shows a red light.

When the device is fully charged, the indicator shows a green light.

When the battery is low, both memory mode and PC camera mode cannot be used normally,









318-C

**PRODUCT DESCRIPTION**  
Thank you for purchasing this equipment, it is complex to use, so please read this manual in detail to understand how to operate the microscope before using it.

**WICHTIGE HINWEISE**  
1. Please fully charge the product before first use. Please do not charge directly through the PC, but choose a 5V-2A adapter.  
2. In PC mode, this device only supports USB3.0 or higher interface, not USB2.0 interface.  
3. This product is not a biological microscope and is not suitable for cell biology research.  
4. This equipment is equipped with a coaxial lens. Unlike traditional digital microscopes, it maintains clarity throughout the entire magnification range without the need for refocusing. Please read the instructions carefully before use.  
5. This device cannot be used normally. This is not a product failure. If the device cannot be used normally, please contact the manufacturer for repair or replacement.  
6. Do not disassemble the product or component structure yourself. Otherwise it will cause image blur and direct imaging quality.  
7. Do not touch the lens or the camera lens with your hands. Otherwise it will cause image blur and direct imaging quality.  
8. Do not disassemble the product or component structure yourself. Otherwise it will cause image blur and direct imaging quality.

**WICHTIGE HINWEISE**  
1. Please use a clean and conforming 5V/2A helmeted adapter to charge the device.  
2. This device only supports USB3.0 or higher interface, not USB2.0 interface.  
3. This product is not a biological microscope and is not suitable for cell biology research.  
4. This equipment is equipped with a coaxial lens. Unlike traditional digital microscopes, it maintains clarity throughout the entire magnification range without the need for refocusing. Please read the instructions carefully before use.  
5. This device cannot be used normally. This is not a product failure. If the device cannot be used normally, please contact the manufacturer for repair or replacement.  
6. Do not disassemble the product or component structure yourself. Otherwise it will cause image blur and direct imaging quality.  
7. Do not touch the lens or the camera lens with your hands. Otherwise it will cause image blur and direct imaging quality.  
8. Do not disassemble the product or component structure yourself. Otherwise it will cause image blur and direct imaging quality.

**FUNKTIONSEINFÜHRUNG**

1. Power button: Press and hold for 3 seconds to switch on/off the device.  
2. Menu key: Confirm selection / screen flip.  
3. Right selection key: Confirm selection / screen flip.  
4. Left selection key: Confirm selection / screen flip.

**EINFÜHRUNG IN DIE WERKBANK**

1. Right selection key: Confirm selection / screen flip.  
2. Left selection key: Confirm selection / screen flip.  
3. Power button: Press and hold for 3 seconds to switch on/off the device.  
4. Menu key: Confirm selection / screen flip.

**PRODUKTSPEZIFIKATIONEN**

Screen Größe	Bildschirmgröße 10.1 IPS
	Bildschirmauflösung 1024*600P
	Betriebssysteme Windows.XP/4
	Mac OS 11.0 oder höher
	TF-Kapazität Support expansion 0-64GB
	Eingangsspannung & Art 5V/2A
	Batteriekapazität 3000-mAh-Lithiumbatterie
Andere	Betriebszeit 1 Std
	Ladezeit 3 Std
	Betriebs Temperatur 10 °C bis 50 °C
	temperatorking -15 °C bis 75 °C
	Lichtquelle 30 hoch errichtless bfe
	Sprachen Simplified Chinese / Traditional Chinese / Japanese / English / Korean / French / German / Spanish / Italian / Russian / Polish

**SCHRITTE ZU UNS**

1. After opening the package, put the 3 base plates together as shown in the picture below.  
2. Combine the bracket bars and the base plates together with screws as shown in the picture below.

**FUNKTIONSTASTE**

1. After switching on, the product is in photo mode by default. Click the "OK" key to take photos, click the "Z" key once to enter the camera mode, click "ESC" to return to the main menu.  
2. Short press the "Z" key to set as: "Photographic mode" - "Video mode" - "File browsing mode", with three modes circling.  
3. In "Photography mode", click the "MENU" key to enter the menu page. In "Video mode", click the "MENU" key to enter the menu page. In "File browsing mode", click the "MENU" key to enter the menu page.

**EINFÜHRUNG IN DEN MODUS**

Das Produkt verfügt über drei Modusfunktionen:  
1. Speichermodus: An PC anschließen, TF-Karte lesen, schreiben und formatieren.  
2. PC-Kameramodus: Stellen Sie eine Verbindung zu einem Computer her und verwenden Sie die Software, wodurch der große Bildschirm intuitiver wird.  
3. Normalmodus: Normaler Nutzungsmodus des Geräts

**1. Speichermodus:**  
Connect the microscope to the computer via USB data cable, select the required item, click the "OK" key to enter the menu page, and click the "MENU" key to enter the menu page.  
**2. PC-Kamera-Modus:** (Nur supports USB3.0 oder höher Schnittstelle, unterstützt nicht USB2.0-Schnittstelle)  
1. Einmalige Funktionstasten sind nicht verfügbar.  
2. In PC-Kameramodus ist es normal, dass der Gerätemonitor direkt die Anzeige zeigt.  
3. Wenn Sie die Kamera anschließen, bitte wiederholen Sie die Schritte zum Erreichen eines koaxialen Fokus.  
4. Wenn Sie die Kamera anschließen, bitte wiederholen Sie die Schritte zum Erreichen eines koaxialen Fokus.

**II. Die Softwareseitenanzeige**

1. Softwareseite „AMCAP“, wie folgt  
2. Seite  
3. Software

**Notiz** If the following situation occurs for a long time during the operation, please refer to the following instructions:

a. Firstly, please disassemble the Type-C cable and reinsert it, or plug the data cable into the USB port at the back of the computer case to ensure that the device is powered properly.  
b. Secondly, if the software still cannot be installed, please check the system configuration to see if the software installation can be performed.

**KOPIEREN VON BILD- UND VIDEODATEN**

A. Card reader  
B. Type-C data line

Wenn das Gerät beim Kopieren nicht mit dem Computer verbunden ist, bitte stellen Sie das Gerät neu oder schließen Sie das Typ-C-Kabel an. Sie müssen die Typ-C-Kabel vor während der Datenübertragung einstecken, und die Typ-C-Kabel sollte nicht abgezogen werden.

**FAQ-Hilfe**

1. Das Produkt lässt sich nicht einschalten.  
2. Das Produkt ist tot.  
3. Das Bild ist nicht klar, wenn sich das Objekt nicht unter der Linse befindet.  
4. Aufladen des Produkts.  
5. Bitte verwenden Sie zum Laden des Geräts einen 5V-2A-Adapter.  
6. Bitte verwenden Sie zum Laden des Geräts einen 5V-2A-Adapter.  
7. Bitte verwenden Sie zum Laden des Geräts einen 5V-2A-Adapter.  
8. Bitte verwenden Sie zum Laden des Geräts einen 5V-2A-Adapter.

**FCR-Erklärung**

Any changes or modifications not expressly approved by the party responsible for compliance may void the user's authority to operate the device.  
This device complies with Part 15 of the FCC Rules. Changes or modifications not expressly approved by the party responsible for compliance may void the user's authority to operate the device.  
This device complies with Part 15 of the FCC Rules. Changes or modifications not expressly approved by the party responsible for compliance may void the user's authority to operate the device.

**WICHTIGE HINWEISE**

1. Please use a clean and conforming 5V/2A helmeted adapter to charge the device.  
2. This device only supports USB3.0 or higher interface, not USB2.0 interface.  
3. This product is not a biological microscope and is not suitable for cell biology research.  
4. This equipment is equipped with a coaxial lens. Unlike traditional digital microscopes, it maintains clarity throughout the entire magnification range without the need for refocusing. Please read the instructions carefully before use.  
5. This device cannot be used normally. This is not a product failure. If the device cannot be used normally, please contact the manufacturer for repair or replacement.  
6. Do not disassemble the product or component structure yourself. Otherwise it will cause image blur and direct imaging quality.  
7. Do not touch the lens or the camera lens with your hands. Otherwise it will cause image blur and direct imaging quality.  
8. Do not disassemble the product or component structure yourself. Otherwise it will cause image blur and direct imaging quality.

**WICHTIGE HINWEISE**

1. Please use a clean and conforming 5V/2A helmeted adapter to charge the device.  
2. This device only supports USB3.0 or higher interface, not USB2.0 interface.  
3. This product is not a biological microscope and is not suitable for cell biology research.  
4. This equipment is equipped with a coaxial lens. Unlike traditional digital microscopes, it maintains clarity throughout the entire magnification range without the need for refocusing. Please read the instructions carefully before use.  
5. This device cannot be used normally. This is not a product failure. If the device cannot be used normally, please contact the manufacturer for repair or replacement.  
6. Do not disassemble the product or component structure yourself. Otherwise it will cause image blur and direct imaging quality.  
7. Do not touch the lens or the camera lens with your hands. Otherwise it will cause image blur and direct imaging quality.  
8. Do not disassemble the product or component structure yourself. Otherwise it will cause image blur and direct imaging quality.

**WICHTIGE HINWEISE**

1. Please use a clean and conforming 5V/2A helmeted adapter to charge the device.  
2. This device only supports USB3.0 or higher interface, not USB2.0 interface.  
3. This product is not a biological microscope and is not suitable for cell biology research.  
4. This equipment is equipped with a coaxial lens. Unlike traditional digital microscopes, it maintains clarity throughout the entire magnification range without the need for refocusing. Please read the instructions carefully before use.  
5. This device cannot be used normally. This is not a product failure. If the device cannot be used normally, please contact the manufacturer for repair or replacement.  
6. Do not disassemble the product or component structure yourself. Otherwise it will cause image blur and direct imaging quality.  
7. Do not touch the lens or the camera lens with your hands. Otherwise it will cause image blur and direct imaging quality.  
8. Do not disassemble the product or component structure yourself. Otherwise it will cause image blur and direct imaging quality.

**WICHTIGE HINWEISE**

1. Please use a clean and conforming 5V/2A helmeted adapter to charge the device.  
2. This device only supports USB3.0 or higher interface, not USB2.0 interface.  
3. This product is not a biological microscope and is not suitable for cell biology research.  
4. This equipment is equipped with a coaxial lens. Unlike traditional digital microscopes, it maintains clarity throughout the entire magnification range without the need for refocusing. Please read the instructions carefully before use.  
5. This device cannot be used normally. This is not a product failure. If the device cannot be used normally, please contact the manufacturer for repair or replacement.  
6. Do not disassemble the product or component structure yourself. Otherwise it will cause image blur and direct imaging quality.  
7. Do not touch the lens or the camera lens with your hands. Otherwise it will cause image blur and direct imaging quality.  
8. Do not disassemble the product or component structure yourself. Otherwise it will cause image blur and direct imaging quality.

**WICHTIGE HINWEISE**

1. Please use a clean and conforming 5V/2A helmeted adapter to charge the device.  
2. This device only supports USB3.0 or higher interface, not USB2.0 interface.  
3. This product is not a biological microscope and is not suitable for cell biology research.  
4. This equipment is equipped with a coaxial lens. Unlike traditional digital microscopes, it maintains clarity throughout the entire magnification range without the need for refocusing. Please read the instructions carefully before use.  
5. This device cannot be used normally. This is not a product failure. If the device cannot be used normally, please contact the manufacturer for repair or replacement.  
6. Do not disassemble the product or component structure yourself. Otherwise it will cause image blur and direct imaging quality.  
7. Do not touch the lens or the camera lens with your hands. Otherwise it will cause image blur and direct imaging quality.  
8. Do not disassemble the product or component structure yourself. Otherwise it will cause image blur and direct imaging quality.

**WICHTIGE HINWEISE**

1. Please use a clean and conforming 5V/2A helmeted adapter to charge the device.  
2. This device only supports USB3.0 or higher interface, not USB2.0 interface.  
3. This product is not a biological microscope and is not suitable for cell biology research.  
4. This equipment is equipped with a coaxial lens. Unlike traditional digital microscopes, it maintains clarity throughout the entire magnification range without the need for refocusing. Please read the instructions carefully before use.  
5. This device cannot be used normally. This is not a product failure. If the device cannot be used normally, please contact the manufacturer for repair or replacement.  
6. Do not disassemble the product or component structure yourself. Otherwise it will cause image blur and direct imaging quality.  
7. Do not touch the lens or the camera lens with your hands. Otherwise it will cause image blur and direct imaging quality.  
8. Do not disassemble the product or component structure yourself. Otherwise it will cause image blur and direct imaging quality.

**WICHTIGE HINWEISE**

1. Please use a clean and conforming 5V/2A helmeted adapter to charge the device.  
2. This device only supports USB3.0 or higher interface, not USB2.0 interface.  
3. This product is not a biological microscope and is not suitable for cell biology research.  
4. This equipment is equipped with a coaxial lens. Unlike traditional digital microscopes, it maintains clarity throughout the entire magnification range without the need for refocusing. Please read the instructions carefully before use.  
5. This device cannot be used normally. This is not a product failure. If the device cannot be used normally, please contact the manufacturer for repair or replacement.  
6. Do not disassemble the product or component structure yourself. Otherwise it will cause image blur and direct imaging quality.  
7. Do not touch the lens or the camera lens with your hands. Otherwise it will cause image blur and direct imaging quality.  
8. Do not disassemble the product or component structure yourself. Otherwise it will cause image blur and direct imaging quality.

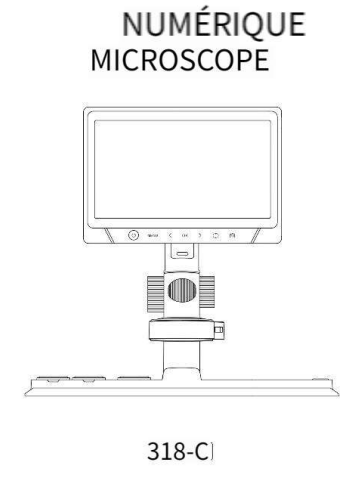
**WICHTIGE HINWEISE**

1. Please use a clean and conforming 5V/2A helmeted adapter to charge the device.  
2. This device only supports USB3.0 or higher interface, not USB2.0 interface.  
3. This product is not a biological microscope and is not suitable for cell biology research.  
4. This equipment is equipped with a coaxial lens. Unlike traditional digital microscopes, it maintains clarity throughout the entire magnification range without the need for refocusing. Please read the instructions carefully before use.  
5. This device cannot be used normally. This is not a product failure. If the device cannot be used normally, please contact the manufacturer for repair or replacement.  
6. Do not disassemble the product or component structure yourself. Otherwise it will cause image blur and direct imaging quality.  
7. Do not touch the lens or the camera lens with your hands. Otherwise it will cause image blur and direct imaging quality.  
8. Do not disassemble the product or component structure yourself. Otherwise it will cause image blur and direct imaging quality.

**WICHTIGE HINWEISE**

1. Please use a clean and conforming 5V/2A helmeted adapter to charge the device.  
2. This device only supports USB3.0 or higher interface, not USB2.0 interface.  
3. This product is not a biological microscope and is not suitable for cell biology research.  
4. This equipment is equipped with a coaxial lens. Unlike traditional digital microscopes, it maintains clarity throughout the entire magnification range without the need for refocusing. Please read the instructions carefully before use.  
5. This device cannot be used normally. This is not a product failure. If the device cannot be used normally, please contact the manufacturer for repair or replacement.  
6. Do not disassemble the product or component structure yourself. Otherwise it will cause image blur and direct imaging quality.  
7. Do not touch the lens or the camera lens with your hands. Otherwise it will cause image blur and direct imaging quality.  
8. Do not disassemble the product or component structure yourself. Otherwise it will cause image blur and direct imaging quality.





318-C

**NUMÉRIQUE MICROSCOPE**

**PRODUCT DESCRIPTION**  
Thank you for purchasing this equipment, it is complex to use, so please read this manual in detail to understand how to operate the microscope before using it.

**REMARQUES IMPORTANTES**  
1. Please fully charge the product before first use. Pila fullness ne le fait pas charge directly through the PC, but chose a 5V-2A adapter.  
2. Dans PC mode, this device only supports USB2.0 or supérieur interface, not USB2.0 interface.  
3. This product is not a biological microscope and is not suitable for cell biology research.  
4. This equipment is equipped with a coaxial lens. Unlike traditional digital microscopes, it maintains clarity throughout the entire magnification range without the need for refocusing. Please read the instructions carefully before use.  
5. Get appareil ne peut pas être utilisé avec précision.  
6. When using the microscope, the specific magnification effect is subject to the actual picture taken.  
7. Lorsque la batterie est faible, le mode de stockage et le mode PC camera mode cannot be used normally. This is not a product failure.  
8. Do not disassemble the product or components of an element by yourself to avoid damage to the product.

**BATTERIE INSTRUCTION**  
1. Please use a domestic 5V/2A charger to charge the device.  
2. Cet appareil prend en charge le chargement pendant son utilisation.  
3. If the device is left unused for a long period of time, please ensure that it is charged at least once every 3 months to prevent irreparable damage caused by over-charging of the battery.

**INTRODUCTION DES FONCTIONS**

G Touche écran droite faire défiler vers le bas  
Touche de commutation de mode G Appuyez brièvement pour charger de pièce photo. Appuyez sur G pour photo.

**Clé photo**  
1. Cliquez sur la touche photo pour prendre un photo.  
2. Cliquez sur la touche photo pour prendre un photo.

**Interrupteur d'éclairage LED**  
1. Cliquez sur la touche photo pour prendre un photo.  
2. Cliquez sur la touche photo pour prendre un photo.

**9 Bouton de réinitialisation**  
1. Cliquez sur la touche photo pour prendre un photo.  
2. Cliquez sur la touche photo pour prendre un photo.

**1 emplacement pour carte TF**  
1. Cliquez sur la touche photo pour prendre un photo.  
2. Cliquez sur la touche photo pour prendre un photo.

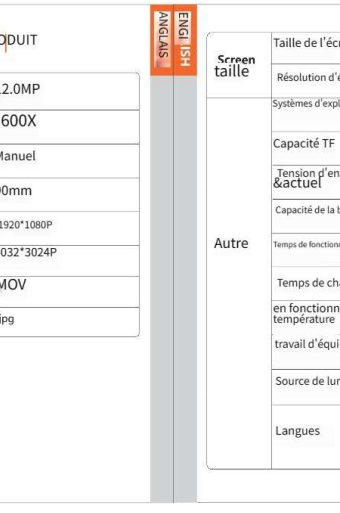
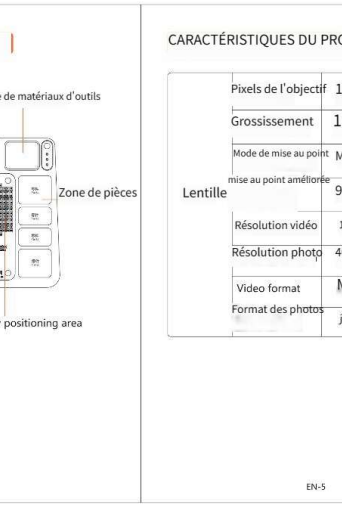
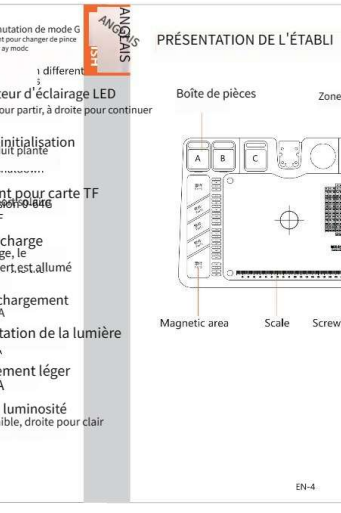
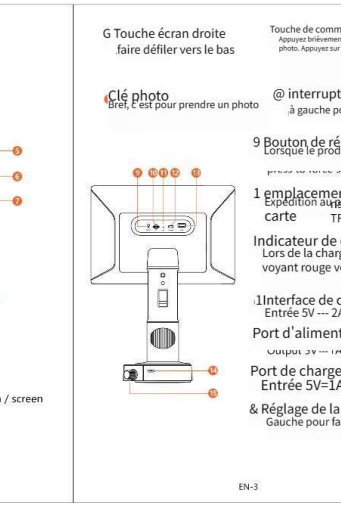
**Indicateur de charge**  
1. Cliquez sur la touche photo pour prendre un photo.  
2. Cliquez sur la touche photo pour prendre un photo.

**1 Interface de chargement**  
1. Cliquez sur la touche photo pour prendre un photo.  
2. Cliquez sur la touche photo pour prendre un photo.

**Port d'alimentation de la lumière**  
1. Cliquez sur la touche photo pour prendre un photo.  
2. Cliquez sur la touche photo pour prendre un photo.

**Port de chargement léger**  
1. Cliquez sur la touche photo pour prendre un photo.  
2. Cliquez sur la touche photo pour prendre un photo.

**Touche écran gauche**  
1. Cliquez sur la touche photo pour prendre un photo.  
2. Cliquez sur la touche photo pour prendre un photo.



**PRÉSENTATION DE L'ÉTABLI**

Boîte de pièces  
Zone de matériaux d'outils  
Zone de pièces  
Magnetic area  
Scale  
Screw positioning area

**CARACTÉRISTIQUES DU PRODUIT**

Pixels de l'objectif	12.0MP
Grossissement	1600X
Mode de mise au point	Manuel
Lentille	90mm
Résolution vidéo	1920*1080P
Résolution photo	4032*3024P
Format des photos	jpg

**Autre**

Taille de l'écran	10.1 IPS
Résolution d'écran	1024*600P
Systèmes d'exploitation	Windows.XP/4
Capacité TF	Support expansion 0-64GB
Tension d'entrée & actuel	5V/2A
Capacité de la batterie	Batterie au lithium 3000 mAh
Temps de fonctionnement	1 heures
Temps de charge	3 heures
en fonctionnement température	10 °C ~ 50 °C
travail d'équipe	-15 °C ~ 75 °C
Source de lumière	30 haute erightness petit ami
Langues	Simplified Chinese / Traditional Chinese / Japanese / English / Korean / French / German / Spanish / Italian / Russian / Polish

**ÉTAPES POUR NOUS**

1. Après avoir ouvert le package, put the 3 base plates together as shown in the picture below.

2. Combine the bracket bars and the base plates together with screws as shown in the picture below.

3. Attach the main unit to the bracket as shown in the picture below.

4. Avant d'utiliser cet appareil, vous devez insérer la carte TF.

5. After fixing the workstation screws and hold the power button interrupteur pendant 3 secondes pour allumer l'appareil et commencer à travailler.

**BOUTON DE FONCTION**

After switching on, the product is in photo mode by default, click the "OK" key to take photos, click the "L" key once to enter the camera mode, click "D" for camera menu, click "M" for video mode navigation.

Short press the "L" key to set as: "Photographic mode" - "Video mode" - "File browsing mode", with three modes intuitif.

Donner l'élément de menu requis.

3. Select the required item, click the "OK" key to enter selected item, click "M" key to return to the main menu.

4. Une fois le réglage terminé, cliquez sur la touche "OK" pour confirmer le réglage.

5. La première fois que vous utilisez l'appareil, vous devez aller à la page de configuration.

6. Cliquez sur "Photo Booth" et sélectionnez l'appareil photo "USB CAMERA" pour passer en mode caméra PC. Cliquez et exécutez "Photo Booth".

7. Cliquez sur "Photo Booth" et sélectionnez l'appareil photo "USB CAMERA".

8. Vous pouvez également utiliser le logiciel alternatif "Quick Time Joueur".

**INTRODUCTION DES MÔDES**

Le produit dispose de trois fonctions de mode, qui sont les suivantes:

1. Mode mémoire : connectez-vous à un ordinateur et téléchargez et installez le logiciel "AMCAP".
2. Mode caméra PC : connectez-vous à un ordinateur et téléchargez et installez le logiciel "Camera Windows".
3. Mode normal : mode d'utilisation normal de l'appareil photo sous Windows 1 et vous devez modifier les paramètres de confidentialité de la caméra, ce qui est nécessaire pour autoriser l'accès à la caméra.

1. Mode mémoire : Connectez le microscope to the computer via USB data cable, sélectionnez le mode mémoire, puis cliquez sur le bouton OK pour afficher la sauvegarde photos and videos on the computer.

2. Mode caméra PC : (Seulement supports USB3.0 ou supérieur interface, ne supporte pas USB2.0) Remarque : lors de l'utilisation du mode PC. Certaines touches de fonction ne seront pas disponibles.

3. Mode normal : mode d'utilisation normal de l'appareil photo sous Windows 1 et vous devez modifier les paramètres de confidentialité de la caméra, ce qui est nécessaire pour autoriser l'accès à la caméra.

**INTRODUCTION DES MÔDES**

Le produit dispose de trois fonctions de mode, qui sont les suivantes:

1. Mode mémoire : connectez-vous à un ordinateur et téléchargez et installez le logiciel "AMCAP".
2. Mode caméra PC : connectez-vous à un ordinateur et téléchargez et installez le logiciel "Camera Windows".
3. Mode normal : mode d'utilisation normal de l'appareil photo sous Windows 1 et vous devez modifier les paramètres de confidentialité de la caméra, ce qui est nécessaire pour autoriser l'accès à la caméra.

1. Mode mémoire : Connectez le microscope to the computer via USB data cable, sélectionnez le mode mémoire, puis cliquez sur le bouton OK pour afficher la sauvegarde photos and videos on the computer.

2. Mode caméra PC : (Seulement supports USB3.0 ou supérieur interface, ne supporte pas USB2.0) Remarque : lors de l'utilisation du mode PC. Certaines touches de fonction ne seront pas disponibles.

3. Mode normal : mode d'utilisation normal de l'appareil photo sous Windows 1 et vous devez modifier les paramètres de confidentialité de la caméra, ce qui est nécessaire pour autoriser l'accès à la caméra.

**INTRODUCTION DES MÔDES**

Le produit dispose de trois fonctions de mode, qui sont les suivantes:

1. Mode mémoire : connectez-vous à un ordinateur et téléchargez et installez le logiciel "AMCAP".
2. Mode caméra PC : connectez-vous à un ordinateur et téléchargez et installez le logiciel "Camera Windows".
3. Mode normal : mode d'utilisation normal de l'appareil photo sous Windows 1 et vous devez modifier les paramètres de confidentialité de la caméra, ce qui est nécessaire pour autoriser l'accès à la caméra.

1. Mode mémoire : Connectez le microscope to the computer via USB data cable, sélectionnez le mode mémoire, puis cliquez sur le bouton OK pour afficher la sauvegarde photos and videos on the computer.

2. Mode caméra PC : (Seulement supports USB3.0 ou supérieur interface, ne supporte pas USB2.0) Remarque : lors de l'utilisation du mode PC. Certaines touches de fonction ne seront pas disponibles.

3. Mode normal : mode d'utilisation normal de l'appareil photo sous Windows 1 et vous devez modifier les paramètres de confidentialité de la caméra, ce qui est nécessaire pour autoriser l'accès à la caméra.

**INTRODUCTION DES MÔDES**

Le produit dispose de trois fonctions de mode, qui sont les suivantes:

1. Mode mémoire : connectez-vous à un ordinateur et téléchargez et installez le logiciel "AMCAP".
2. Mode caméra PC : connectez-vous à un ordinateur et téléchargez et installez le logiciel "Camera Windows".
3. Mode normal : mode d'utilisation normal de l'appareil photo sous Windows 1 et vous devez modifier les paramètres de confidentialité de la caméra, ce qui est nécessaire pour autoriser l'accès à la caméra.

1. Mode mémoire : Connectez le microscope to the computer via USB data cable, sélectionnez le mode mémoire, puis cliquez sur le bouton OK pour afficher la sauvegarde photos and videos on the computer.

2. Mode caméra PC : (Seulement supports USB3.0 ou supérieur interface, ne supporte pas USB2.0) Remarque : lors de l'utilisation du mode PC. Certaines touches de fonction ne seront pas disponibles.

3. Mode normal : mode d'utilisation normal de l'appareil photo sous Windows 1 et vous devez modifier les paramètres de confidentialité de la caméra, ce qui est nécessaire pour autoriser l'accès à la caméra.

**INTRODUCTION DES MÔDES**

Le produit dispose de trois fonctions de mode, qui sont les suivantes:

1. Mode mémoire : connectez-vous à un ordinateur et téléchargez et installez le logiciel "AMCAP".
2. Mode caméra PC : connectez-vous à un ordinateur et téléchargez et installez le logiciel "Camera Windows".
3. Mode normal : mode d'utilisation normal de l'appareil photo sous Windows 1 et vous devez modifier les paramètres de confidentialité de la caméra, ce qui est nécessaire pour autoriser l'accès à la caméra.

1. Mode mémoire : Connectez le microscope to the computer via USB data cable, sélectionnez le mode mémoire, puis cliquez sur le bouton OK pour afficher la sauvegarde photos and videos on the computer.

2. Mode caméra PC : (Seulement supports USB3.0 ou supérieur interface, ne supporte pas USB2.0) Remarque : lors de l'utilisation du mode PC. Certaines touches de fonction ne seront pas disponibles.

3. Mode normal : mode d'utilisation normal de l'appareil photo sous Windows 1 et vous devez modifier les paramètres de confidentialité de la caméra, ce qui est nécessaire pour autoriser l'accès à la caméra.

**INTRODUCTION DES MÔDES**

Le produit dispose de trois fonctions de mode, qui sont les suivantes:

1. Mode mémoire : connectez-vous à un ordinateur et téléchargez et installez le logiciel "AMCAP".
2. Mode caméra PC : connectez-vous à un ordinateur et téléchargez et installez le logiciel "Camera Windows".
3. Mode normal : mode d'utilisation normal de l'appareil photo sous Windows 1 et vous devez modifier les paramètres de confidentialité de la caméra, ce qui est nécessaire pour autoriser l'accès à la caméra.

1. Mode mémoire : Connectez le microscope to the computer via USB data cable, sélectionnez le mode mémoire, puis cliquez sur le bouton OK pour afficher la sauvegarde photos and videos on the computer.

2. Mode caméra PC : (Seulement supports USB3.0 ou supérieur interface, ne supporte pas USB2.0) Remarque : lors de l'utilisation du mode PC. Certaines touches de fonction ne seront pas disponibles.

3. Mode normal : mode d'utilisation normal de l'appareil photo sous Windows 1 et vous devez modifier les paramètres de confidentialité de la caméra, ce qui est nécessaire pour autoriser l'accès à la caméra.

**INTRODUCTION DES MÔDES**

Le produit dispose de trois fonctions de mode, qui sont les suivantes:

1. Mode mémoire : connectez-vous à un ordinateur et téléchargez et installez le logiciel "AMCAP".
2. Mode caméra PC : connectez-vous à un ordinateur et téléchargez et installez le logiciel "Camera Windows".
3. Mode normal : mode d'utilisation normal de l'appareil photo sous Windows 1 et vous devez modifier les paramètres de confidentialité de la caméra, ce qui est nécessaire pour autoriser l'accès à la caméra.

1. Mode mémoire : Connectez le microscope to the computer via USB data cable, sélectionnez le mode mémoire, puis cliquez sur le bouton OK pour afficher la sauvegarde photos and videos on the computer.

2. Mode caméra PC : (Seulement supports USB3.0 ou supérieur interface, ne supporte pas USB2.0) Remarque : lors de l'utilisation du mode PC. Certaines touches de fonction ne seront pas disponibles.

3. Mode normal : mode d'utilisation normal de l'appareil photo sous Windows 1 et vous devez modifier les paramètres de confidentialité de la caméra, ce qui est nécessaire pour autoriser l'accès à la caméra.

**INTRODUCTION DES MÔDES**

Le produit dispose de trois fonctions de mode, qui sont les suivantes:

1. Mode mémoire : connectez-vous à un ordinateur et téléchargez et installez le logiciel "AMCAP".
2. Mode caméra PC : connectez-vous à un ordinateur et téléchargez et installez le logiciel "Camera Windows".
3. Mode normal : mode d'utilisation normal de l'appareil photo sous Windows 1 et vous devez modifier les paramètres de confidentialité de la caméra, ce qui est nécessaire pour autoriser l'accès à la caméra.

1. Mode mémoire : Connectez le microscope to the computer via USB data cable, sélectionnez le mode mémoire, puis cliquez sur le bouton OK pour afficher la sauvegarde photos and videos on the computer.

2. Mode caméra PC : (Seulement supports USB3.0 ou supérieur interface, ne supporte pas USB2.0) Remarque : lors de l'utilisation du mode PC. Certaines touches de fonction ne seront pas disponibles.

3. Mode normal : mode d'utilisation normal de l'appareil photo sous Windows 1 et vous devez modifier les paramètres de confidentialité de la caméra, ce qui est nécessaire pour autoriser l'accès à la caméra.

**INTRODUCTION DES MÔDES**

Le produit dispose de trois fonctions de mode, qui sont les suivantes:

1. Mode mémoire : connectez-vous à un ordinateur et téléchargez et installez le logiciel "AMCAP".
2. Mode caméra PC : connectez-vous à un ordinateur et téléchargez et installez le logiciel "Camera Windows".
3. Mode normal : mode d'utilisation normal de l'appareil photo sous Windows 1 et vous devez modifier les paramètres de confidentialité de la caméra, ce qui est nécessaire pour autoriser l'accès à la caméra.

1. Mode mémoire : Connectez le microscope to the computer via USB data cable, sélectionnez le mode mémoire, puis cliquez sur le bouton OK pour afficher la sauvegarde photos and videos on the computer.

2. Mode caméra PC : (Seulement supports USB3.0 ou supérieur interface, ne supporte pas USB2.0) Remarque : lors de l'utilisation du mode PC. Certaines touches de fonction ne seront pas disponibles.

3. Mode normal : mode d'utilisation normal de l'appareil photo sous Windows 1 et vous devez modifier les paramètres de confidentialité de la caméra, ce qui est nécessaire pour autoriser l'accès à la caméra.

**INTRODUCTION DES MÔDES**

Le produit dispose de trois fonctions de mode, qui sont les suivantes:

1. Mode mémoire : connectez-vous à un ordinateur et téléchargez et installez le logiciel "AMCAP".
2. Mode caméra PC : connectez-vous à un ordinateur et téléchargez et installez le logiciel "Camera Windows".
3. Mode normal : mode d'utilisation normal de l'appareil photo sous Windows 1 et vous devez modifier les paramètres de confidentialité de la caméra, ce qui est nécessaire pour autoriser l'accès à la caméra.

1. Mode mémoire : Connectez le microscope to the computer via USB data cable, sélectionnez le mode mémoire, puis cliquez sur le bouton OK pour afficher la sauvegarde photos and videos on the computer.

2. Mode caméra PC : (Seulement supports USB3.0 ou supérieur interface, ne supporte pas USB2.0) Remarque : lors de l'utilisation du mode PC. Certaines touches de fonction ne seront pas disponibles.

3. Mode normal : mode d'utilisation normal de l'appareil photo sous Windows 1 et vous devez modifier les paramètres de confidentialité de la caméra, ce qui est nécessaire pour autoriser l'accès à la caméra.

**INTRODUCTION DES MÔDES**

Le produit dispose de trois fonctions de mode, qui sont les suivantes:

1. Mode mémoire : connectez-vous à un ordinateur et téléchargez et installez le logiciel "AMCAP".
2. Mode caméra PC : connectez-vous à un ordinateur et téléchargez et installez le logiciel "Camera Windows".
3. Mode normal : mode d'utilisation normal de l'appareil photo sous Windows 1 et vous devez modifier les paramètres de confidentialité de la caméra, ce qui est nécessaire pour autoriser l'accès à la caméra.

1. Mode mémoire : Connectez le microscope to the computer via USB data cable, sélectionnez le mode mémoire, puis cliquez sur le bouton OK pour afficher la sauvegarde photos and videos on the computer.

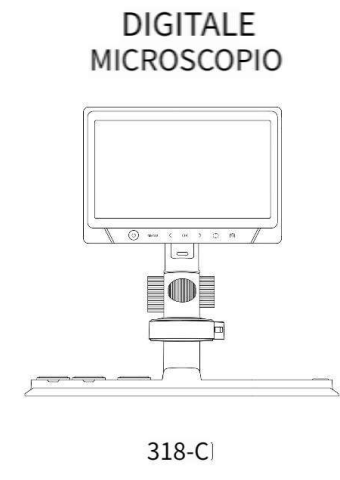
2. Mode caméra PC : (Seulement supports USB3.0 ou supérieur interface, ne supporte pas USB2.0) Remarque : lors de l'utilisation du mode PC. Certaines touches de fonction ne seront pas disponibles.

3. Mode normal : mode d'utilisation normal de l'appareil photo sous Windows 1 et vous devez modifier les paramètres de confidentialité de la caméra, ce qui est nécessaire pour autoriser l'accès à la caméra.







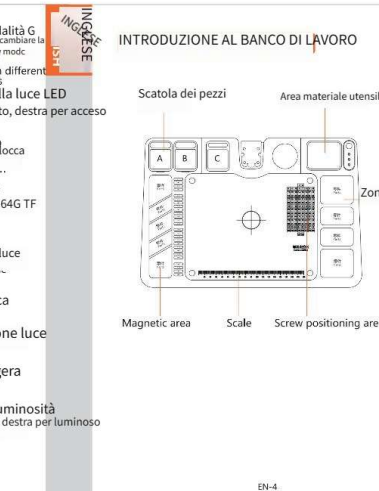
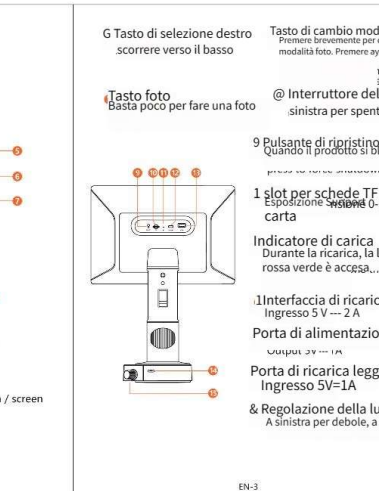


**PRODUCT DESCRIPTION**  
Thank you for purchasing this equipment, it is complex to use, so please read this manual in detail to understand how to operate the microscope before using it.

**NOTE IMPORTANT**  
1. Please fully charge the product before first use. Pila facilità no charge directly through the PC, but choose a 5V-2A adapter.  
2. The PC cable, this device only supports USB3.0 or superiore interface, not USB2.0 interface.  
3. This product is not a biological microscope and is not suitable for cell biology research.  
4. This equipment is equipped with a coaxial lens. Unlike traditional digital microscopes, it maintains clarity throughout the entire magnification range without the need for refocusing. Please read the instructions carefully before use.  
5. This device is not a precision microscope, the specific magnification effect is subject to the actual picture taken.  
6. When the battery is in charging mode and PC camera mode cannot be used normally. This is not a product failure.  
7. Do not touch the objective or other parts of the microscope, otherwise it will cause image blur and direct imaging quality.  
8. Do not disassemble the product or contact structural part of yourself to avoid damage to the microscope.

**PASTELLA ISTRUZIONI**  
1. Please use the domestic safe and conform to a 5V/2A to charge this device.  
2. Questo dispositivo supporta la ricarica durante l'uso.  
3. If the device is left unused for a long period of time, please ensure that it is charged at least once every 3 months to prevent irreparable damage caused by over-discharge of the battery.

**INTRODUZIONE ALLA FUNZIONE**  
G Tasto di selezione destro scorrere verso il basso  
Tasto di cambio modalità G Premere brevemente per cambiare la modalità foto. Premere a lungo per cambiare la modalità video.  
Tasto foto Basta poco per fare una foto  
9 Pulsante di ripristino Quando il prodotto si blocca, premere il pulsante di ripristino per tornare alla pagina iniziale.  
1 slot per schede TF Espansione di memoria da 0-64G TF carta  
Indicatore di carica Durante la ricarica, la luce rossa verde è accesa...  
1 Interfaccia di ricarica Ingresso 5V-2A  
Porta di alimentazione luce Ingresso 5V-1A  
Porta di ricarica leggera Ingresso 5V-1A  
& Regolazione della luminosità A sinistra per debole, a destra per luminoso

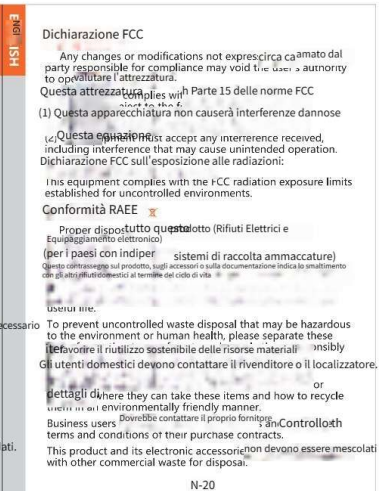
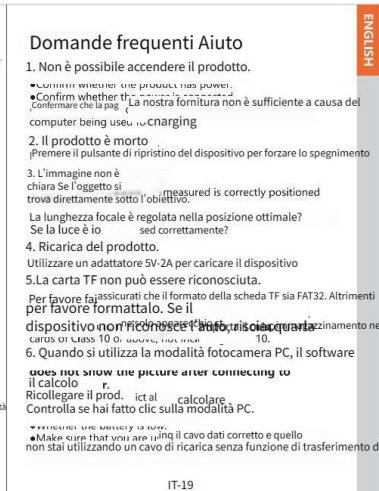
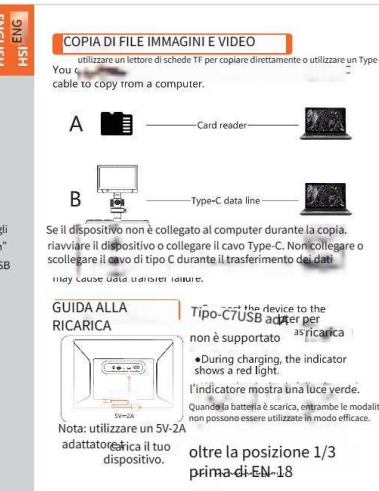
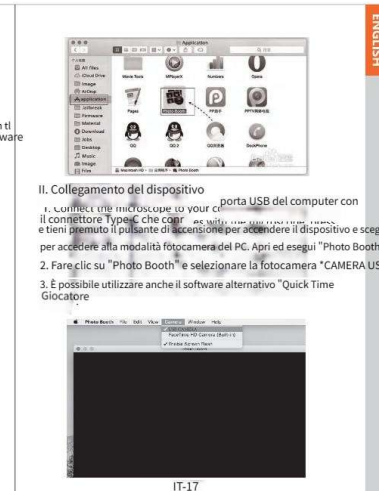
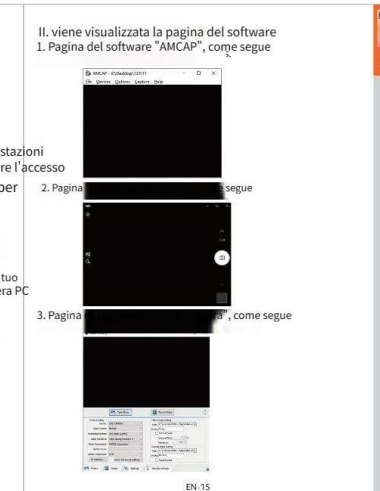
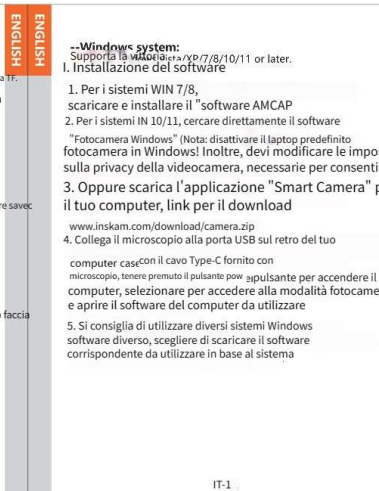
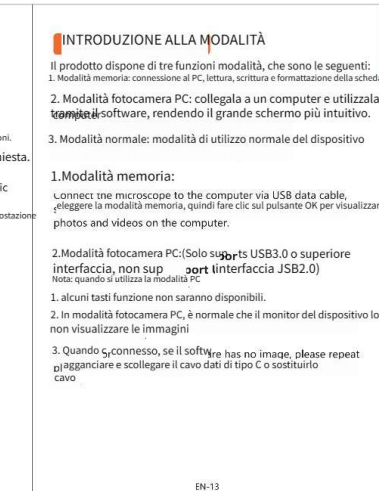
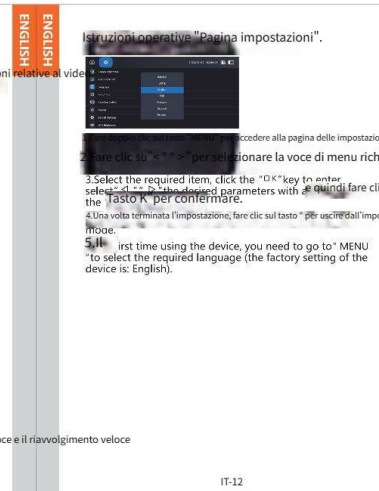
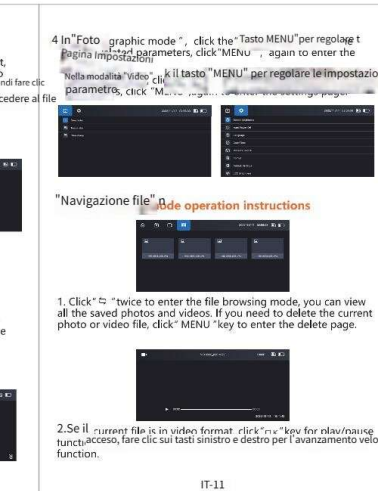
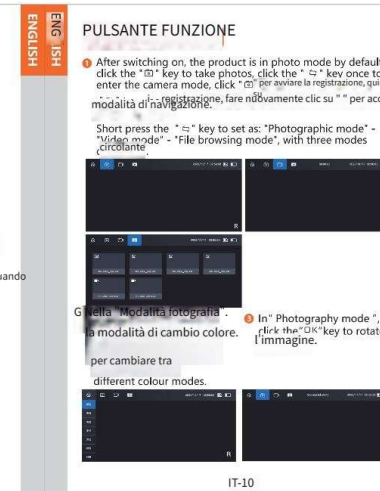
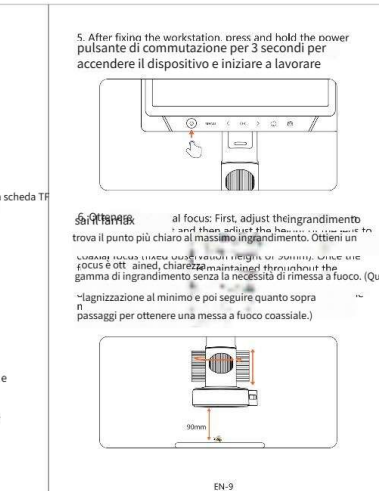
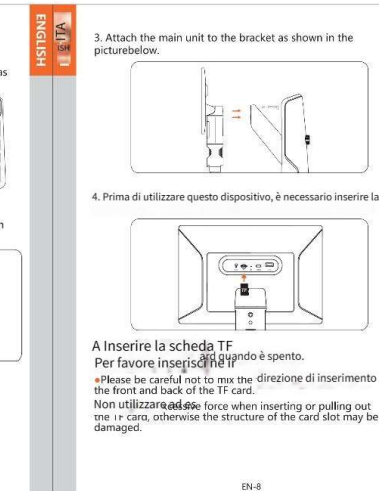


**SPECIFICHE DEL PRODOTTO**

Pixel dell'obiettivo	12,0MP
Ingrandimento	1600X
Modalità di messa a fuoco	Manuale
Messa a fuoco assistita	90 mm
Risoluzione video	1920*1080 P
Risoluzione foto	4032*3024P
Video format	MOV
Formato foto	jpg

**Altro**

Dimensione dello schermo	10.1 IPS
Risoluzione dello schermo	1024*600 P
Sistemi operativi	Windows.XP/4 Mac OS 11.0 superiore
Capacità del TF	Support expansion 0-64GB
Tensione di ingresso & attuale	5V/2A
Capacità della batteria	Batteria al litio da 3000 mAh
Tempo di operatività	1 ora
Tempo di carica	3 ore
Operativo temperatura	10°C ~ 50°C
teamerworking	-15°C ~ 75°C
Fonte di luce	30 alto erightjess bfe
Le lingue	Simplified Chinese / Traditional Chinese / Japanese / English / Korean / French / German / Spanish / Italian / Russian / Polish







318-C

**디지털 현미경**

**PRODUCT DESCRIPTION**  
Thank you for purchasing this equipment. It is complex to use, so please read this manual in detail to understand how to operate the microscope before using it.

**중요 사항**  
1. Please fully charge the product before first use. Please charge directly through the PC, but choose a 5V-2A adapter.  
2. PC charging: this device only supports USB2.0 interface.  
3. This product is not a biological microscope and is not suitable for cell biology research.  
4. This equipment is equipped with a coaxial lens. Unlike traditional digital microscopes, it maintains clarity throughout the entire magnification range without the need for refocusing. Please read the instructions carefully before use.  
5. When using the microscope, the specific magnification effect is subject to the actual picture taken.  
6. The storage mode and PC camera mode cannot be used normally.  
7. Please do not disassemble the product or connect it to other equipment, otherwise it will cause image blur and direct image quality.  
8. Do not disassemble the product or connect it to other equipment, otherwise it will cause image blur and direct image quality.

**안전 지침**  
1. Please use the product in a safe and stable environment.  
2. If the device is left unused for a long period of time, please ensure that it is charged at least once every 3 months to prevent irreparable damage caused by over-discharge of the battery.

**기능 소개**

1. 렌즈 픽셀: 12.0MP  
2. 확대: 1600X  
3. 포커싱 모드: 수동  
4. 초점을 맞춘 TF 카드: 90mm  
5. 비디오 해상도: 1920\*1080P  
6. 사진 해상도: 4032\*3024P  
7. Video format: MOV  
8. 사진 형식: jpg

**Power button**  
Press and hold for 3 seconds to switch on/off the device.

**Menu key**  
Set the parameters / Confirm selection / screen flip

**위크벤지 소개**

1. 렌즈 픽셀: 12.0MP  
2. 확대: 1600X  
3. 포커싱 모드: 수동  
4. 초점을 맞춘 TF 카드: 90mm  
5. 비디오 해상도: 1920\*1080P  
6. 사진 해상도: 4032\*3024P  
7. Video format: MOV  
8. 사진 형식: jpg

**부품 상자**

1. 렌즈 픽셀: 12.0MP  
2. 확대: 1600X  
3. 포커싱 모드: 수동  
4. 초점을 맞춘 TF 카드: 90mm  
5. 비디오 해상도: 1920\*1080P  
6. 사진 해상도: 4032\*3024P  
7. Video format: MOV  
8. 사진 형식: jpg

**제품 사양**

화면 크기	10.1IPS
화면 해상도	1024*600P
운영체제	Windows.XP/4 Mac OS 11.0 이상
TF 용량	Support expansion 0-64GB
전원 장치	5V/2A
배터리 용량	3000mAh 리튬 배터리
운영 시간	1시간
운영 온도	10°C ~ 50°C
동작 온도	-15°C ~ 75°C
광원	30 높은 brightness
언어	Simplified Chinese / Traditional Chinese / Japanese / English / Korean / French / German / Spanish / Italian / Russian / Portuguese

**우리에게 다가오는 단계**

1. 렌즈 픽셀: 12.0MP  
2. 확대: 1600X  
3. 포커싱 모드: 수동  
4. 초점을 맞춘 TF 카드: 90mm  
5. 비디오 해상도: 1920\*1080P  
6. 사진 해상도: 4032\*3024P  
7. Video format: MOV  
8. 사진 형식: jpg

**A TF 카드 삽입 방법**

1. 렌즈 픽셀: 12.0MP  
2. 확대: 1600X  
3. 포커싱 모드: 수동  
4. 초점을 맞춘 TF 카드: 90mm  
5. 비디오 해상도: 1920\*1080P  
6. 사진 해상도: 4032\*3024P  
7. Video format: MOV  
8. 사진 형식: jpg

**기능 버튼**

1. 렌즈 픽셀: 12.0MP  
2. 확대: 1600X  
3. 포커싱 모드: 수동  
4. 초점을 맞춘 TF 카드: 90mm  
5. 비디오 해상도: 1920\*1080P  
6. 사진 해상도: 4032\*3024P  
7. Video format: MOV  
8. 사진 형식: jpg

**파일 찾아보기**

1. 렌즈 픽셀: 12.0MP  
2. 확대: 1600X  
3. 포커싱 모드: 수동  
4. 초점을 맞춘 TF 카드: 90mm  
5. 비디오 해상도: 1920\*1080P  
6. 사진 해상도: 4032\*3024P  
7. Video format: MOV  
8. 사진 형식: jpg

**모드 소개**

1. 렌즈 픽셀: 12.0MP  
2. 확대: 1600X  
3. 포커싱 모드: 수동  
4. 초점을 맞춘 TF 카드: 90mm  
5. 비디오 해상도: 1920\*1080P  
6. 사진 해상도: 4032\*3024P  
7. Video format: MOV  
8. 사진 형식: jpg

**II. 소프트웨어 페이지 표시**

1. 렌즈 픽셀: 12.0MP  
2. 확대: 1600X  
3. 포커싱 모드: 수동  
4. 초점을 맞춘 TF 카드: 90mm  
5. 비디오 해상도: 1920\*1080P  
6. 사진 해상도: 4032\*3024P  
7. Video format: MOV  
8. 사진 형식: jpg

**사진 및 비디오 파일 복사**

1. 렌즈 픽셀: 12.0MP  
2. 확대: 1600X  
3. 포커싱 모드: 수동  
4. 초점을 맞춘 TF 카드: 90mm  
5. 비디오 해상도: 1920\*1080P  
6. 사진 해상도: 4032\*3024P  
7. Video format: MOV  
8. 사진 형식: jpg

**충전 가이드**

1. 렌즈 픽셀: 12.0MP  
2. 확대: 1600X  
3. 포커싱 모드: 수동  
4. 초점을 맞춘 TF 카드: 90mm  
5. 비디오 해상도: 1920\*1080P  
6. 사진 해상도: 4032\*3024P  
7. Video format: MOV  
8. 사진 형식: jpg

**FAQ 도움말**

1. 렌즈 픽셀: 12.0MP  
2. 확대: 1600X  
3. 포커싱 모드: 수동  
4. 초점을 맞춘 TF 카드: 90mm  
5. 비디오 해상도: 1920\*1080P  
6. 사진 해상도: 4032\*3024P  
7. Video format: MOV  
8. 사진 형식: jpg

**FCC 선언문**

1. 렌즈 픽셀: 12.0MP  
2. 확대: 1600X  
3. 포커싱 모드: 수동  
4. 초점을 맞춘 TF 카드: 90mm  
5. 비디오 해상도: 1920\*1080P  
6. 사진 해상도: 4032\*3024P  
7. Video format: MOV  
8. 사진 형식: jpg

**EN-1**

1. 렌즈 픽셀: 12.0MP  
2. 확대: 1600X  
3. 포커싱 모드: 수동  
4. 초점을 맞춘 TF 카드: 90mm  
5. 비디오 해상도: 1920\*1080P  
6. 사진 해상도: 4032\*3024P  
7. Video format: MOV  
8. 사진 형식: jpg

**EN-2**

1. 렌즈 픽셀: 12.0MP  
2. 확대: 1600X  
3. 포커싱 모드: 수동  
4. 초점을 맞춘 TF 카드: 90mm  
5. 비디오 해상도: 1920\*1080P  
6. 사진 해상도: 4032\*3024P  
7. Video format: MOV  
8. 사진 형식: jpg

**EN-3**

1. 렌즈 픽셀: 12.0MP  
2. 확대: 1600X  
3. 포커싱 모드: 수동  
4. 초점을 맞춘 TF 카드: 90mm  
5. 비디오 해상도: 1920\*1080P  
6. 사진 해상도: 4032\*3024P  
7. Video format: MOV  
8. 사진 형식: jpg

**EN-4**

1. 렌즈 픽셀: 12.0MP  
2. 확대: 1600X  
3. 포커싱 모드: 수동  
4. 초점을 맞춘 TF 카드: 90mm  
5. 비디오 해상도: 1920\*1080P  
6. 사진 해상도: 4032\*3024P  
7. Video format: MOV  
8. 사진 형식: jpg

**EN-5**

1. 렌즈 픽셀: 12.0MP  
2. 확대: 1600X  
3. 포커싱 모드: 수동  
4. 초점을 맞춘 TF 카드: 90mm  
5. 비디오 해상도: 1920\*1080P  
6. 사진 해상도: 4032\*3024P  
7. Video format: MOV  
8. 사진 형식: jpg

**EN-6**

1. 렌즈 픽셀: 12.0MP  
2. 확대: 1600X  
3. 포커싱 모드: 수동  
4. 초점을 맞춘 TF 카드: 90mm  
5. 비디오 해상도: 1920\*1080P  
6. 사진 해상도: 4032\*3024P  
7. Video format: MOV  
8. 사진 형식: jpg

**EN-7**

1. 렌즈 픽셀: 12.0MP  
2. 확대: 1600X  
3. 포커싱 모드: 수동  
4. 초점을 맞춘 TF 카드: 90mm  
5. 비디오 해상도: 1920\*1080P  
6. 사진 해상도: 4032\*3024P  
7. Video format: MOV  
8. 사진 형식: jpg

**EN-8**

1. 렌즈 픽셀: 12.0MP  
2. 확대: 1600X  
3. 포커싱 모드: 수동  
4. 초점을 맞춘 TF 카드: 90mm  
5. 비디오 해상도: 1920\*1080P  
6. 사진 해상도: 4032\*3024P  
7. Video format: MOV  
8. 사진 형식: jpg

**EN-9**

1. 렌즈 픽셀: 12.0MP  
2. 확대: 1600X  
3. 포커싱 모드: 수동  
4. 초점을 맞춘 TF 카드: 90mm  
5. 비디오 해상도: 1920\*1080P  
6. 사진 해상도: 4032\*3024P  
7. Video format: MOV  
8. 사진 형식: jpg

**EN-10**

1. 렌즈 픽셀: 12.0MP  
2. 확대: 1600X  
3. 포커싱 모드: 수동  
4. 초점을 맞춘 TF 카드: 90mm  
5. 비디오 해상도: 1920\*1080P  
6. 사진 해상도: 4032\*3024P  
7. Video format: MOV  
8. 사진 형식: jpg

**EN-11**

1. 렌즈 픽셀: 12.0MP  
2. 확대: 1600X  
3. 포커싱 모드: 수동  
4. 초점을 맞춘 TF 카드: 90mm  
5. 비디오 해상도: 1920\*1080P  
6. 사진 해상도: 4032\*3024P  
7. Video format: MOV  
8. 사진 형식: jpg

**EN-12**

1. 렌즈 픽셀: 12.0MP  
2. 확대: 1600X  
3. 포커싱 모드: 수동  
4. 초점을 맞춘 TF 카드: 90mm  
5. 비디오 해상도: 1920\*1080P  
6. 사진 해상도: 4032\*3024P  
7. Video format: MOV  
8. 사진 형식: jpg

**EN-13**

1. 렌즈 픽셀: 12.0MP  
2. 확대: 1600X  
3. 포커싱 모드: 수동  
4. 초점을 맞춘 TF 카드: 90mm  
5. 비디오 해상도: 1920\*1080P  
6. 사진 해상도: 4032\*3024P  
7. Video format: MOV  
8. 사진 형식: jpg

**EN-14**

1. 렌즈 픽셀: 12.0MP  
2. 확대: 1600X  
3. 포커싱 모드: 수동  
4. 초점을 맞춘 TF 카드: 90mm  
5. 비디오 해상도: 1920\*1080P  
6. 사진 해상도: 4032\*3024P  
7. Video format: MOV  
8. 사진 형식: jpg

**EN-15**

1. 렌즈 픽셀: 12.0MP  
2. 확대: 1600X  
3. 포커싱 모드: 수동  
4. 초점을 맞춘 TF 카드: 90mm  
5. 비디오 해상도: 1920\*1080P  
6. 사진 해상도: 4032\*3024P  
7. Video format: MOV  
8. 사진 형식: jpg

**EN-16**

1. 렌즈 픽셀: 12.0MP  
2. 확대: 1600X  
3. 포커싱 모드: 수동  
4. 초점을 맞춘 TF 카드: 90mm  
5. 비디오 해상도: 1920\*1080P  
6. 사진 해상도: 4032\*3024P  
7. Video format: MOV  
8. 사진 형식: jpg

**EN-17**

1. 렌즈 픽셀: 12.0MP  
2. 확대: 1600X  
3. 포커싱 모드: 수동  
4. 초점을 맞춘 TF 카드: 90mm  
5. 비디오 해상도: 1920\*1080P  
6. 사진 해상도: 4032\*3024P  
7. Video format: MOV  
8. 사진 형식: jpg

**EN-18**

1. 렌즈 픽셀: 12.0MP  
2. 확대: 1600X  
3. 포커싱 모드: 수동  
4. 초점을 맞춘 TF 카드: 90mm  
5. 비디오 해상도: 1920\*1080P  
6. 사진 해상도: 4032\*3024P  
7. Video format: MOV  
8. 사진 형식: jpg

**EN-19**

1. 렌즈 픽셀: 12.0MP  
2. 확대: 1600X  
3. 포커싱 모드: 수동  
4. 초점을 맞춘 TF 카드: 90mm  
5. 비디오 해상도: 1920\*1080P  
6. 사진 해상도: 4032\*3024P  
7. Video format: MOV  
8. 사진 형식: jpg

**EN-20**

1. 렌즈 픽셀: 12.0MP  
2. 확대: 1600X  
3. 포커싱 모드: 수동  
4. 초점을 맞춘 TF 카드: 90mm  
5. 비디오 해상도: 1920\*1080P  
6. 사진 해상도: 4032\*3024P  
7. Video format: MOV  
8. 사진 형식: jpg





**DIGITAL MIKROSKOP**

**318-C**

**PRODUCT DESCRIPTION**  
Thank you for purchasing this equipment, it is complex to use, so please read this manual in detail to understand how to operate the microscope before using it.

**VIKTIGA ANMÄRKNINGAR**  
1. Please fully charge the product before first use. Plug the power cable into the power socket and charge directly through the PC, but choose a 5V-2A adapter.  
2. PC include this device only supports USB2.0 or higher interface, not USB2.0 interface.  
3. This product is not a biological microscope and is not suitable for cell biology research.  
4. This equipment is equipped with a coaxial lens. Unlike traditional digital microscopes, it maintains clarity throughout the entire magnification range without the need for refocusing. Please read the instructions carefully before use.  
5. This equipment is not a microscope, the specific magnification effect is subject to the actual picture taken.  
6. The storage mode and PC camera mode cannot be used normally. This is not a product failure.  
7. Do not touch the objective lens and the camera lens directly, otherwise it will cause image blur and direct image quality.  
8. Do not disassemble the product or component structure of yourself, ignore the safety of the equipment.

**SMETNINGAR**  
1. Please open the lid and connect the 5V/2A power adapter to the power port of the device.  
2. This device should be charged for a long period of time, please ensure that it is charged at least once every 3 months to prevent irreparable damage caused by over-discharge of the battery.

**FUNKTION INTRODUKTION**

**Höger väljarknapp**  
roll down

**G Lägesknapp**  
Kort tryck för att byta fotostil. Tryck på 3 sekunder för att byta till annan fotostil.

**LED-ljusomkopplare**  
När produkten kraschar

**Återställningsknapp**  
När produkten kraschar

**TF-kortplats**  
Support expansion 0-64G kort

**Laddningsindikator**  
Vid laddning lyser den röda ljusgröna lampan.

**Laddningsgränssnitt**  
Ingång 5V-2A

**Lätt strömförsörjningsport**  
Ingång 5V-2A

**Lätt laddningsport**  
Ingång 5V-2A

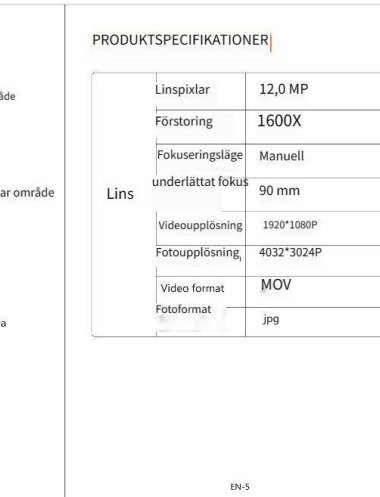
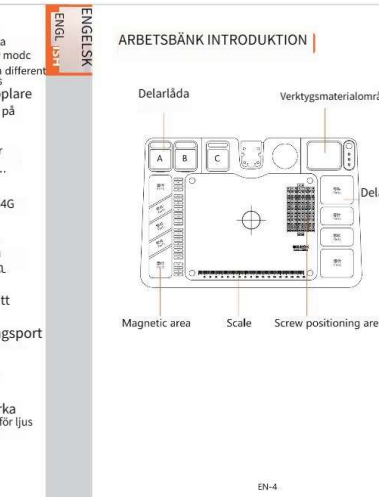
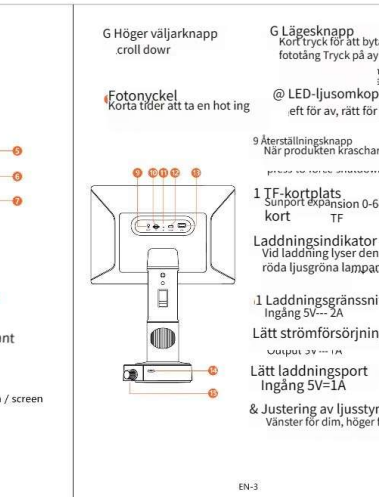
**& Justering av ljusstyrka**  
Vänster för dim, Höger för ljus

**Power button**  
Press and hold for 3 seconds to switch on/off the device

**Vänster väljarknapp**  
rolla upp

**Meny nyckelvant**  
Set the parameters

**OK-knapp / Skärmen**  
Confirm selection / screen flip

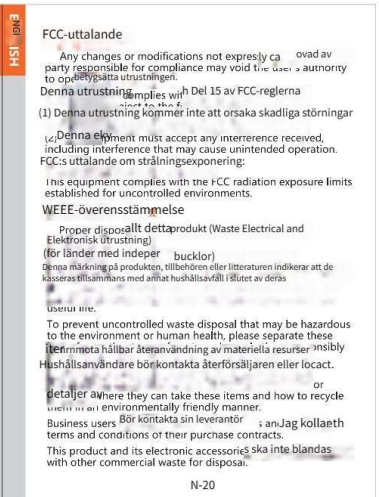
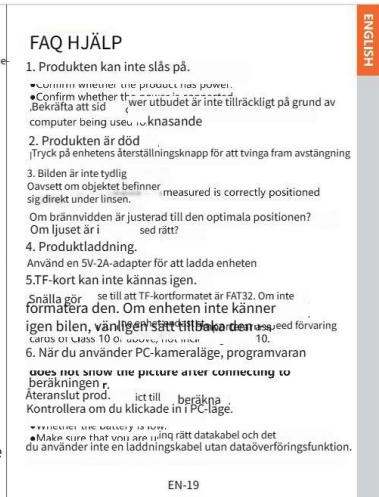
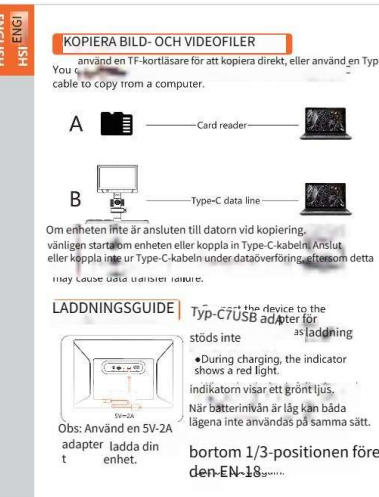
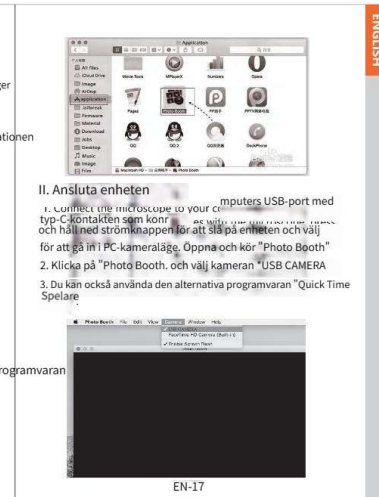
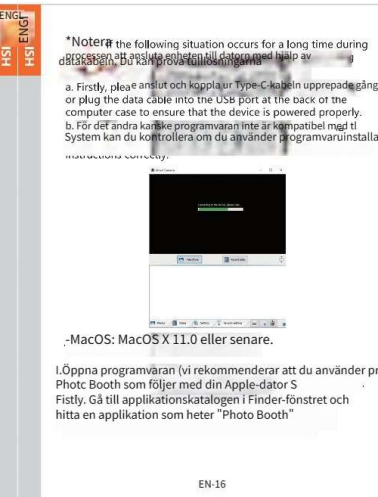
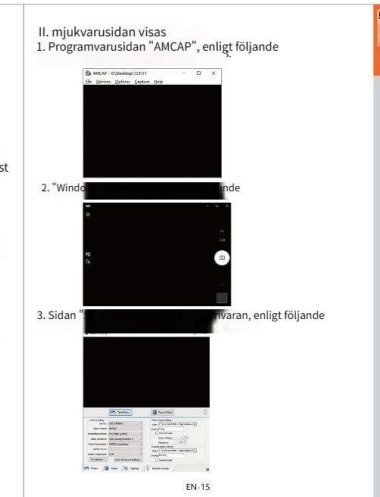
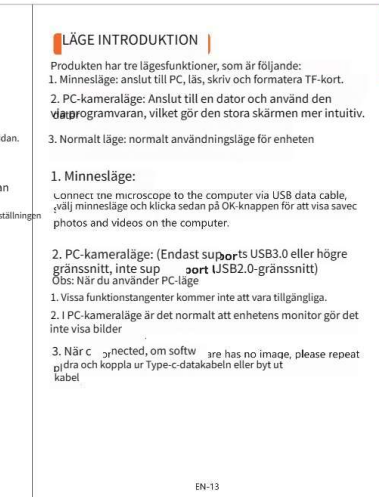
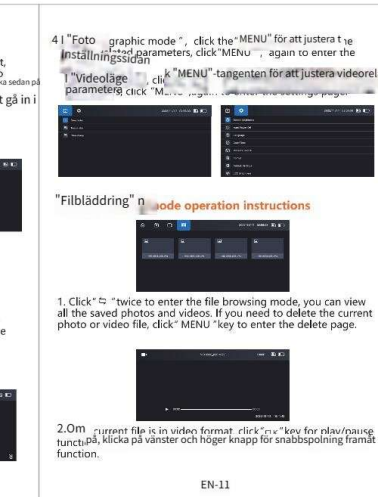
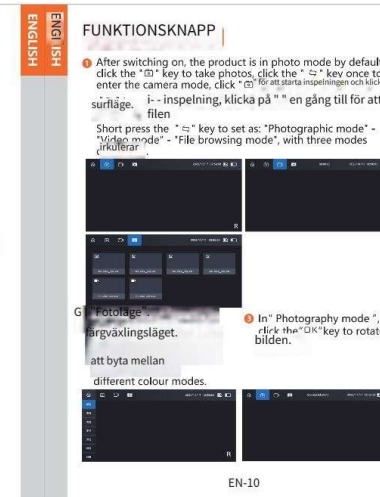
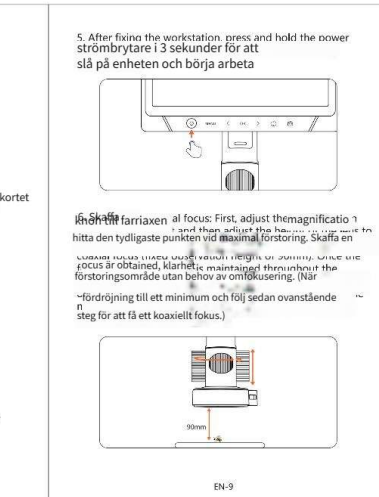
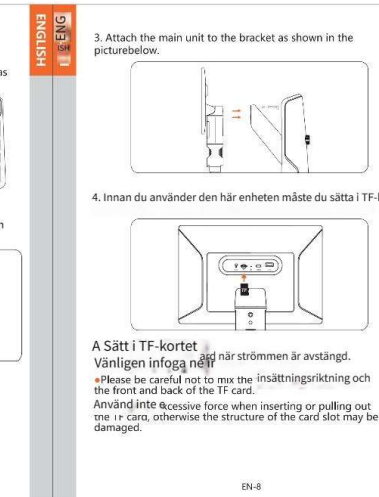


**PRODUKTSPECIFIKATIONER**

Linspixlar	12,0 MP
Förstoring	1600X
Fokuseringsläge	Manuell
underlättat fokus	90 mm
Videoupplösning	1920*1080P
Fotoupplösning	4032*3024P
Video format	MOV
Fotoformat	jpg

**Övrig**

Skärmstorlek	10.1 IPS
Skärmupplösning	1024*600P
Operativsystem	Windows.XP/4
TF kapacitet	Support expansion 0-64GB
Spänning & strömvarde	5V/2A
Batterikapacitet	3000mAh litiumbatteri
Drifttid	1 tim
Laddningstid	3 timmar
Drift temperatur	10C ~ 50C
temperatorkörning	-15C ~ 75C
Ljuskälla	30 hög erichtjess bfe
språk	Simplified Chinese / Traditional Chinese / Japanese / English / Korean / French / German / Spanish / Italian / Russian / Polish



**ARBETSBÄNK INTRODUKTION**

**Delarlåda**

**Verktygsmaterialområde**

**Delarområde**

**Magnetic area**

**Scale**

**Screw positioning area**

**FUNKTIONSKNAPP**

• När du trycker på "ON" för att starta enheten, kommer den att gå in i "Photography mode" som standard. Tryck på "ON" för att byta till "Video mode" eller "File browsing mode".

• När du trycker på "ON" för att starta enheten, kommer den att gå in i "Photography mode" som standard. Tryck på "ON" för att byta till "Video mode" eller "File browsing mode".

**LÄGE INTRODUKTION**

Produkten har tre lägefunktioner, som är följande:  
1. Minnesläge: anslut till dator och använd den för att spara bilder och videor.  
2. PC-kameraläge: Anslut till dator och använd den för att spara bilder och videor.  
3. Normalt läge: normalt användningsläge för enheten.

1. Vissa funktionsknappar kommer inte att vara tillgängliga.  
2. TF-kameraläge är det normalt att enhetens monitor gör det inte via bilder.  
3. När du använder enheten, om du inte ser bilden, vänligen kontrollera om du har anslutit USB-kabeln korrekt.

**LÄGE INTRODUKTION**

Produkten har tre lägefunktioner, som är följande:  
1. Minnesläge: anslut till dator och använd den för att spara bilder och videor.  
2. PC-kameraläge: Anslut till dator och använd den för att spara bilder och videor.  
3. Normalt läge: normalt användningsläge för enheten.

1. Vissa funktionsknappar kommer inte att vara tillgängliga.  
2. TF-kameraläge är det normalt att enhetens monitor gör det inte via bilder.  
3. När du använder enheten, om du inte ser bilden, vänligen kontrollera om du har anslutit USB-kabeln korrekt.

**LÄGE INTRODUKTION**

Produkten har tre lägefunktioner, som är följande:  
1. Minnesläge: anslut till dator och använd den för att spara bilder och videor.  
2. PC-kameraläge: Anslut till dator och använd den för att spara bilder och videor.  
3. Normalt läge: normalt användningsläge för enheten.

1. Vissa funktionsknappar kommer inte att vara tillgängliga.  
2. TF-kameraläge är det normalt att enhetens monitor gör det inte via bilder.  
3. När du använder enheten, om du inte ser bilden, vänligen kontrollera om du har anslutit USB-kabeln korrekt.

**LÄGE INTRODUKTION**

Produkten har tre lägefunktioner, som är följande:  
1. Minnesläge: anslut till dator och använd den för att spara bilder och videor.  
2. PC-kameraläge: Anslut till dator och använd den för att spara bilder och videor.  
3. Normalt läge: normalt användningsläge för enheten.

1. Vissa funktionsknappar kommer inte att vara tillgängliga.  
2. TF-kameraläge är det normalt att enhetens monitor gör det inte via bilder.  
3. När du använder enheten, om du inte ser bilden, vänligen kontrollera om du har anslutit USB-kabeln korrekt.

**LÄGE INTRODUKTION**

Produkten har tre lägefunktioner, som är följande:  
1. Minnesläge: anslut till dator och använd den för att spara bilder och videor.  
2. PC-kameraläge: Anslut till dator och använd den för att spara bilder och videor.  
3. Normalt läge: normalt användningsläge för enheten.

1. Vissa funktionsknappar kommer inte att vara tillgängliga.  
2. TF-kameraläge är det normalt att enhetens monitor gör det inte via bilder.  
3. När du använder enheten, om du inte ser bilden, vänligen kontrollera om du har anslutit USB-kabeln korrekt.

**LÄGE INTRODUKTION**

Produkten har tre lägefunktioner, som är följande:  
1. Minnesläge: anslut till dator och använd den för att spara bilder och videor.  
2. PC-kameraläge: Anslut till dator och använd den för att spara bilder och videor.  
3. Normalt läge: normalt användningsläge för enheten.

1. Vissa funktionsknappar kommer inte att vara tillgängliga.  
2. TF-kameraläge är det normalt att enhetens monitor gör det inte via bilder.  
3. När du använder enheten, om du inte ser bilden, vänligen kontrollera om du har anslutit USB-kabeln korrekt.

**LÄGE INTRODUKTION**

Produkten har tre lägefunktioner, som är följande:  
1. Minnesläge: anslut till dator och använd den för att spara bilder och videor.  
2. PC-kameraläge: Anslut till dator och använd den för att spara bilder och videor.  
3. Normalt läge: normalt användningsläge för enheten.

1. Vissa funktionsknappar kommer inte att vara tillgängliga.  
2. TF-kameraläge är det normalt att enhetens monitor gör det inte via bilder.  
3. När du använder enheten, om du inte ser bilden, vänligen kontrollera om du har anslutit USB-kabeln korrekt.

**LÄGE INTRODUKTION**

Produkten har tre lägefunktioner, som är följande:  
1. Minnesläge: anslut till dator och använd den för att spara bilder och videor.  
2. PC-kameraläge: Anslut till dator och använd den för att spara bilder och videor.  
3. Normalt läge: normalt användningsläge för enheten.

1. Vissa funktionsknappar kommer inte att vara tillgängliga.  
2. TF-kameraläge är det normalt att enhetens monitor gör det inte via bilder.  
3. När du använder enheten, om du inte ser bilden, vänligen kontrollera om du har anslutit USB-kabeln korrekt.

**LÄGE INTRODUKTION**

Produkten har tre lägefunktioner, som är följande:  
1. Minnesläge: anslut till dator och använd den för att spara bilder och videor.  
2. PC-kameraläge: Anslut till dator och använd den för att spara bilder och videor.  
3. Normalt läge: normalt användningsläge för enheten.

1. Vissa funktionsknappar kommer inte att vara tillgängliga.  
2. TF-kameraläge är det normalt att enhetens monitor gör det inte via bilder.  
3. När du använder enheten, om du inte ser bilden, vänligen kontrollera om du har anslutit USB-kabeln korrekt.

**LÄGE INTRODUKTION**

Produkten har tre lägefunktioner, som är följande:  
1. Minnesläge: anslut till dator och använd den för att spara bilder och videor.  
2. PC-kameraläge: Anslut till dator och använd den för att spara bilder och videor.  
3. Normalt läge: normalt användningsläge för enheten.

1. Vissa funktionsknappar kommer inte att vara tillgängliga.  
2. TF-kameraläge är det normalt att enhetens monitor gör det inte via bilder.  
3. När du använder enheten, om du inte ser bilden, vänligen kontrollera om du har anslutit USB-kabeln korrekt.

**LÄGE INTRODUKTION**

Produkten har tre lägefunktioner, som är följande:  
1. Minnesläge: anslut till dator och använd den för att spara bilder och videor.  
2. PC-kameraläge: Anslut till dator och använd den för att spara bilder och videor.  
3. Normalt läge: normalt användningsläge för enheten.

1. Vissa funktionsknappar kommer inte att vara tillgängliga.  
2. TF-kameraläge är det normalt att enhetens monitor gör det inte via bilder.  
3. När du använder enheten, om du inte ser bilden, vänligen kontrollera om du har anslutit USB-kabeln korrekt.

**LÄGE INTRODUKTION**

Produkten har tre lägefunktioner, som är följande:  
1. Minnesläge: anslut till dator och använd den för att spara bilder och videor.  
2. PC-kameraläge: Anslut till dator och använd den för att spara bilder och videor.  
3. Normalt läge: normalt användningsläge för enheten.

1. Vissa funktionsknappar kommer inte att vara tillgängliga.  
2. TF-kameraläge är det normalt att enhetens monitor gör det inte via bilder.  
3. När du använder enheten, om du inte ser bilden, vänligen kontrollera om du har anslutit USB-kabeln korrekt.

**LÄGE INTRODUKTION**

Produkten har tre lägefunktioner, som är följande:  
1. Minnesläge: anslut till dator och använd den för att spara bilder och videor.  
2. PC-kameraläge: Anslut till dator och använd den för att spara bilder och videor.  
3. Normalt läge: normalt användningsläge för enheten.

1. Vissa funktionsknappar kommer inte att vara tillgängliga.  
2. TF-kameraläge är det normalt att enhetens monitor gör det inte via bilder.  
3. När du använder enheten, om du inte ser bilden, vänligen kontrollera om du har anslutit USB-kabeln korrekt.

**LÄGE INTRODUKTION**

Produkten har tre lägefunktioner, som är följande:  
1. Minnesläge: anslut till dator och använd den för att spara bilder och videor.  
2. PC-kameraläge: Anslut till dator och använd den för att spara bilder och videor.  
3. Normalt läge: normalt användningsläge för enheten.

1. Vissa funktionsknappar kommer inte att vara tillgängliga.  
2. TF-kameraläge är det normalt att enhetens monitor gör det inte via bilder.  
3. När du använder enheten, om du inte ser bilden, vänligen kontrollera om du har anslutit USB-kabeln korrekt.

**LÄGE INTRODUKTION**

Produkten har tre lägefunktioner, som är följande:  
1. Minnesläge: anslut till dator och använd den för att spara bilder och videor.  
2. PC-kameraläge: Anslut till dator och använd den för att spara bilder och videor.  
3. Normalt läge: normalt användningsläge för enheten.

1. Vissa funktionsknappar kommer inte att vara tillgängliga.  
2. TF-kameraläge är det normalt att enhetens monitor gör det inte via bilder.  
3. När du använder enheten, om du inte ser bilden, vänligen kontrollera om du har anslutit USB-kabeln korrekt.

**LÄGE INTRODUKTION**

Produkten har tre lägefunktioner, som är följande:  
1. Minnesläge: anslut till dator och använd den för att spara bilder och videor.  
2. PC-kameraläge: Anslut till dator och använd den för att spara bilder och videor.  
3. Normalt läge: normalt användningsläge för enheten.

1. Vissa funktionsknappar kommer inte att vara tillgängliga.  
2. TF-kameraläge är det normalt att enhetens monitor gör det inte via bilder.  
3. När du använder enheten, om du inte ser bilden, vänligen kontrollera om du har anslutit USB-kabeln korrekt.

**KOPIERA BILD- OCH VIDEOFILER**

A. Kopiera bild och videofiler till datorn.  
B. Kopiera bild och videofiler till USB-kortet.

Om enheten inte är ansluten till datorn vid kopiering, vänligen starta om enheten eller koppla in Type-C-kabeln. Anslut eller koppla in Type-C-kabeln under dataöverföring och se till att enheten inte är ansluten till datorn vid kopiering.

**LADDNINGSGUIDE**

1. Anslut enheten till datorn via USB-kabeln.  
2. Under laddning, indikatorn visar ett grönt ljus.  
3. När batterinivån är låg, vänligen ladda enheten.  
4. När du använder PC-kameraläge, programvaran kommer inte att laddas.  
5. När du använder enheten, vänligen kontrollera om du har anslutit USB-kabeln korrekt.

**FAO HJÄLP**

1. Produkten kan inte slås på.  
2. Produkten är död.  
3. Bilden är inte tydlig.  
4. Produkten startar om.  
5. TF-kortet kan inte kännas igen.  
6. Produkten startar om.  
7. Produkten startar om.  
8. Produkten startar om.

**FAO HJÄLP**

1. Produkten kan inte slås på.  
2. Produkten är död.  
3. Bilden är inte tydlig.  
4. Produkten startar om.  
5. TF-kortet kan inte kännas igen.  
6. Produkten startar om.  
7. Produkten startar om.  
8. Produkten startar om.

**FAO HJÄLP**

1. Produkten kan inte slås på.  
2. Produkten är död.  
3. Bilden är inte tydlig.  
4. Produkten startar om.  
5. TF-kortet kan inte kännas igen.  
6. Produkten startar om.  
7. Produkten startar om.  
8. Produkten startar om.

**FAO HJÄLP**

1. Produkten kan inte slås på.  
2. Produkten är död.  
3. Bilden är inte tydlig.  
4. Produkten startar om.  
5. TF-kortet kan inte kännas igen.  
6. Produkten startar om.  
7. Produkten startar om.  
8. Produkten startar om.

**FAO HJÄLP**

1. Produkten kan inte slås på.  
2. Produkten är död.  
3. Bilden är inte tydlig.  
4. Produkten startar om.  
5. TF-kortet kan inte kännas igen.  
6. Produkten startar om.  
7. Produkten startar om.  
8. Produkten startar om.

**FAO HJÄLP**

1. Produkten kan inte slås på.  
2. Produkten är död.  
3. Bilden är inte tydlig.  
4. Produkten startar om.  
5. TF-kortet kan inte kännas igen.  
6. Produkten startar om.  
7. Produkten startar om.  
8. Produkten startar om.

**FAO HJÄLP**

1. Produkten kan inte slås på.  
2. Produkten är död.  
3. Bilden är inte tydlig.  
4. Produkten startar om.  
5. TF-kortet kan inte kännas igen.  
6. Produkten startar om.  
7. Produkten startar om.  
8. Produkten startar om.

**FAO HJÄLP**

1. Produkten kan inte slås på.  
2. Produkten är död.  
3. Bilden är inte tydlig.  
4. Produkten startar om.  
5. TF-kortet kan inte kännas igen.  
6. Produkten startar om.  
7. Produkten startar om.  
8. Produkten startar om.

**FAO HJÄLP**

1. Produkten kan inte slås på.  
2. Produkten är död.  
3. Bilden är inte tydlig.  
4. Produkten startar om.  
5. TF-kortet kan inte kännas igen.  
6. Produkten startar om.  
7. Produkten startar om.  
8. Produkten startar om.

**FAO HJÄLP**

1. Produkten kan inte slås på.  
2. Produkten är död.  
3. Bilden är inte tydlig.  
4. Produkten startar om.  
5. TF-kortet kan inte kännas igen.  
6. Produkten startar om.  
7. Produkten startar om.  
8. Produkten startar om.

**FAO HJÄLP**

1. Produkten kan inte slås på.  
2. Produkten är död.  
3. Bilden är inte tydlig.  
4. Produkten startar om.  
5. TF-kortet kan inte kännas igen.  
6. Produkten startar om.  
7. Produkten startar om.  
8. Produkten startar om.

**FAO HJÄLP**

1. Produkten kan inte slås på.  
2. Produkten är död.  
3. Bilden är inte tydlig.  
4. Produkten startar om.  
5. TF-kortet kan inte kännas igen.  
6. Produkten startar om.  
7. Produkten startar om.  
8. Produkten startar om.

**FAO HJÄLP**

1. Produkten kan inte slås på.  
2. Produkten är död.  
3. Bilden är inte tydlig.  
4. Produkten startar om.  
5. TF-kortet kan inte kännas igen.  
6. Produkten startar om.  
7. Produkten startar om.  
8. Produkten startar om.

**FAO HJÄLP**

1. Produkten kan inte slås på.  
2. Produkten är död.  
3. Bilden är inte tydlig.  
4. Produkten startar om.  
5. TF-kortet kan inte kännas igen.  
6. Produkten startar om.  
7. Produkten startar om.  
8. Produkten startar om.

**FAO HJÄLP**

1. Produkten kan inte slås på.  
2. Produkten är död.  
3. Bilden är inte tydlig.  
4. Produkten startar om.  
5. TF-kortet kan inte kännas igen.  
6. Produkten startar om.  
7. Produkten startar om.  
8. Produkten startar om.

**FAO HJÄLP**

1. Produkten kan inte slås på.  
2. Produkten är död.  
3. Bilden är inte tydlig.  
4. Produkten startar om.  
5. TF-kortet kan inte kännas igen.  
6. Produkten startar om.  
7. Produkten startar om.  
8. Produkten startar om.

**FAO HJÄLP**

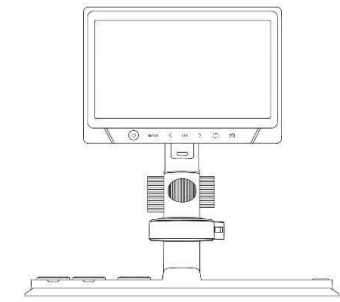
1. Produkten kan inte slås på.  
2. Produkten är död.  
3. Bilden är inte tydlig.  
4. Produkten startar om.  
5. TF-kortet kan inte kännas igen.  
6. Produkten startar om.  
7. Produkten startar om.  
8. Produkten startar om.







# CYFROWY MIKROSKOP



318-C

**PRODUCT DESCRIPTION**  
Thank you for purchasing this equipment, it is complex to use, so please read this manual in detail to understand how to operate the microscope before using it.

**UWAGI**  
1. Please fully charge the product before first use. Please do not charge directly through the PC, but choose a 5V-2A adapter.  
2. In computer mode, please use only supported USB 3.0 or newer interface, not USB2.0 interface.  
3. This product is not a biological microscope and is not suitable for cell biology research.  
4. This equipment is equipped with a coaxial lens. Unlike traditional digital microscopes, it maintains clarity throughout the entire magnification range without the need for refocusing. Please read the instructions carefully before use.  
5. The magnification effect is subject to the actual picture taken.  
6. When the battery level is low, the device will automatically stop working. Please recharge the battery in time.  
7. Do not disassemble the product or change the internal structure without the permission of the manufacturer. Otherwise it will cause image blur and direct damage to the device.  
8. Do not use excessive force when inserting or pulling out the TF card, otherwise it will cause damage to the card slot.

**INSTRUKCJA**  
1. Please read this manual in detail before using the product.  
2. To ensure the device is left unused for a long period of time, please ensure that it is charged at least once every 3 months to prevent irreparable damage caused by over-discharge of the battery.

**WSTĘP FUNKCJI**

**Power button**  
Press and hold for 3 seconds to switch on/off the device

**Menu key**  
Set the parameters

**OK / Confirm selection / Flip**

**Left key**  
Switch

**Prawy klawisz wyboru**  
Scroll down

**Przycisk zmiany trybu**  
Effect: On/Off

**Przycisk resetowania**  
Effect: On/Off

**Przycisk ładowania**  
Effect: On/Off

**Przycisk ładowania światła**  
Effect: On/Off

**Przycisk ładowania światła**  
Effect: On/Off

**WSTĘP DO STOLU WARSZTATOWEGO**

**Obszar części**

**Obszar materiału narzędzia**

**Obszar części**

**Obszar materiału narzędzia**

**Obszar części**

**Obszar materiału narzędzia**

**SPECYFIKACJE PRODUKTU**

Piksele obiektywu	12,0 MP
Powiększenie	1600X
Tryb ustawiania ostrości	podręcznik
Wspomagana koncentracja	TF
Obiektyw	90 mm
Rozdzielczość wideo	1920*1080P
Rozdzielczość zdjęcia	4032*3024P
Video format	MOV
Format zdjęcia	jpg

**Screen**

Rozmiar	10,1 IPS
Rozdzielczość ekranu	1024*600P
System operacyjny	Windows XP/4
Pojemność TF	Max 110 lub więcej
Magnetyczne wejście & aktualny	5V/2A
Pojemność baterii	Bateria litowa 3000 mAh

**Inny**

Czas operacyjny	1 godz
Czas ładowania	3 godz
Operacyjny temperatura	10°C ~ 50°C
teamattoring	-15°C ~ 75°C
Źródło światła	30 wysoki brightness bfe
Języki	Simplified Chinese / Traditional Chinese / Japanese / English / Korean / French / German / Spanish / Italian / Russian / Polish

**KROKI DO NAS**

1. Po otwarciu opakowania, umieść 3 płytki podstawowe zgodnie z obrazem poniżej.

2. Połączyć słupki ramki i płytki podstawowe śrubami zgodnie z obrazem poniżej.

3. Attach the main unit to the bracket as shown in the picture below.

4. Przed użyciem tego urządzenia należy włożyć kartę TF.

5. After fixing the workstation, press and hold the power button for 3 seconds to turn on the device and start working.

6. In Photography mode, click the "OK" key to enter the menu, click the "MENU" key to enter the "File Browsing Mode", and click the "OK" key to enter the "File Browsing Mode".

**PRZYSCISK FUNKCYJNY**

• After switching on, the product is in photo mode by default. Click the "OK" key to take photos, click the "MENU" key to enter the camera mode, click the "OK" key to enter the camera mode, click the "MENU" key to enter the camera mode, click the "OK" key to enter the camera mode.

• Short press the "OK" key to set as: "Photographic mode" - "Video mode" - "File browsing mode", with three modes available.

**WPROWADZENIE TRYBU**

Produkt ma trzy funkcje trybu, które są następujące:  
1. Tryb pamięci: podłącz do komputera, odczytaj, zapisz i sformatuj kartę TF.  
2. Tryb kamery komputerowej: podłącz do komputera i korzystaj z niego.  
3. Tryb normalny: normalny tryb użytkowania urządzenia.

**Wprowadzenie trybu**

1. Tryb pamięci: Podłącz tryb pamięci do komputera za pomocą kabla USB 3.0 lub nowszego interfejsu, nie obsługujemy interfejsu JSB2.0.  
2. Tryb kamery PC: Tylko super szybki USB 3.0 lub nowszy interfejs, nie obsługujemy interfejsu JSB2.0.  
3. Kiedy podłączony jest kabel danych, powtórz kroki 1-3, aby uzyskać odpowiedni interfejs.

**Wprowadzenie trybu**

1. W przypadku systemów Windows XP/7/8/10/11 lub nowszych, pobierz i zainstaluj oprogramowanie „AMCAP” na swój komputer, link do pobrania: [www.inskam.com/download/camera.zip](http://www.inskam.com/download/camera.zip)  
2. W przypadku systemów Windows 10/11 wyszukaj oprogramowanie bezpośrednio „Kamera Windows” (Uwaga: wyłącz domyślny laptop aparat w Windowsie! Musisz także zmienić ustawienia prywatności kamery, które są potrzebne, aby umożliwić dostęp do kamery).  
3. Lub pobierz aplikację „Smart Camera” na swój komputer, link do pobrania: [www.inskam.com/download/camera.zip](http://www.inskam.com/download/camera.zip)  
4. Podłącz mikroskop do portu USB 3.0 lub nowszego interfejsu za pomocą kabla Type-C dołączonego do zestawu mikroskopu, następnie przytrzymaj powrót i kliknij przycisk „KAMERA USB” w celu uruchomienia urządzenia.  
5. Zalecane jest używanie różnych systemów Windows innego oprogramowania, prosimy o pobranie odpowiedniego oprogramowania, które będzie używane zgodnie z systemem.

**Wprowadzenie trybu**

1. W przypadku systemów Windows XP/7/8/10/11 lub nowszych, pobierz i zainstaluj oprogramowanie „AMCAP” na swój komputer, link do pobrania: [www.inskam.com/download/camera.zip](http://www.inskam.com/download/camera.zip)  
2. W przypadku systemów Windows 10/11 wyszukaj oprogramowanie bezpośrednio „Kamera Windows” (Uwaga: wyłącz domyślny laptop aparat w Windowsie! Musisz także zmienić ustawienia prywatności kamery, które są potrzebne, aby umożliwić dostęp do kamery).  
3. Lub pobierz aplikację „Smart Camera” na swój komputer, link do pobrania: [www.inskam.com/download/camera.zip](http://www.inskam.com/download/camera.zip)  
4. Podłącz mikroskop do portu USB 3.0 lub nowszego interfejsu za pomocą kabla Type-C dołączonego do zestawu mikroskopu, następnie przytrzymaj powrót i kliknij przycisk „KAMERA USB” w celu uruchomienia urządzenia.  
5. Zalecane jest używanie różnych systemów Windows innego oprogramowania, prosimy o pobranie odpowiedniego oprogramowania, które będzie używane zgodnie z systemem.

**Wprowadzenie trybu**

1. W przypadku systemów Windows XP/7/8/10/11 lub nowszych, pobierz i zainstaluj oprogramowanie „AMCAP” na swój komputer, link do pobrania: [www.inskam.com/download/camera.zip](http://www.inskam.com/download/camera.zip)  
2. W przypadku systemów Windows 10/11 wyszukaj oprogramowanie bezpośrednio „Kamera Windows” (Uwaga: wyłącz domyślny laptop aparat w Windowsie! Musisz także zmienić ustawienia prywatności kamery, które są potrzebne, aby umożliwić dostęp do kamery).  
3. Lub pobierz aplikację „Smart Camera” na swój komputer, link do pobrania: [www.inskam.com/download/camera.zip](http://www.inskam.com/download/camera.zip)  
4. Podłącz mikroskop do portu USB 3.0 lub nowszego interfejsu za pomocą kabla Type-C dołączonego do zestawu mikroskopu, następnie przytrzymaj powrót i kliknij przycisk „KAMERA USB” w celu uruchomienia urządzenia.  
5. Zalecane jest używanie różnych systemów Windows innego oprogramowania, prosimy o pobranie odpowiedniego oprogramowania, które będzie używane zgodnie z systemem.

**Wprowadzenie trybu**

1. W przypadku systemów Windows XP/7/8/10/11 lub nowszych, pobierz i zainstaluj oprogramowanie „AMCAP” na swój komputer, link do pobrania: [www.inskam.com/download/camera.zip](http://www.inskam.com/download/camera.zip)  
2. W przypadku systemów Windows 10/11 wyszukaj oprogramowanie bezpośrednio „Kamera Windows” (Uwaga: wyłącz domyślny laptop aparat w Windowsie! Musisz także zmienić ustawienia prywatności kamery, które są potrzebne, aby umożliwić dostęp do kamery).  
3. Lub pobierz aplikację „Smart Camera” na swój komputer, link do pobrania: [www.inskam.com/download/camera.zip](http://www.inskam.com/download/camera.zip)  
4. Podłącz mikroskop do portu USB 3.0 lub nowszego interfejsu za pomocą kabla Type-C dołączonego do zestawu mikroskopu, następnie przytrzymaj powrót i kliknij przycisk „KAMERA USB” w celu uruchomienia urządzenia.  
5. Zalecane jest używanie różnych systemów Windows innego oprogramowania, prosimy o pobranie odpowiedniego oprogramowania, które będzie używane zgodnie z systemem.

**Wprowadzenie trybu**

1. W przypadku systemów Windows XP/7/8/10/11 lub nowszych, pobierz i zainstaluj oprogramowanie „AMCAP” na swój komputer, link do pobrania: [www.inskam.com/download/camera.zip](http://www.inskam.com/download/camera.zip)  
2. W przypadku systemów Windows 10/11 wyszukaj oprogramowanie bezpośrednio „Kamera Windows” (Uwaga: wyłącz domyślny laptop aparat w Windowsie! Musisz także zmienić ustawienia prywatności kamery, które są potrzebne, aby umożliwić dostęp do kamery).  
3. Lub pobierz aplikację „Smart Camera” na swój komputer, link do pobrania: [www.inskam.com/download/camera.zip](http://www.inskam.com/download/camera.zip)  
4. Podłącz mikroskop do portu USB 3.0 lub nowszego interfejsu za pomocą kabla Type-C dołączonego do zestawu mikroskopu, następnie przytrzymaj powrót i kliknij przycisk „KAMERA USB” w celu uruchomienia urządzenia.  
5. Zalecane jest używanie różnych systemów Windows innego oprogramowania, prosimy o pobranie odpowiedniego oprogramowania, które będzie używane zgodnie z systemem.

**Wprowadzenie trybu**

1. W przypadku systemów Windows XP/7/8/10/11 lub nowszych, pobierz i zainstaluj oprogramowanie „AMCAP” na swój komputer, link do pobrania: [www.inskam.com/download/camera.zip](http://www.inskam.com/download/camera.zip)  
2. W przypadku systemów Windows 10/11 wyszukaj oprogramowanie bezpośrednio „Kamera Windows” (Uwaga: wyłącz domyślny laptop aparat w Windowsie! Musisz także zmienić ustawienia prywatności kamery, które są potrzebne, aby umożliwić dostęp do kamery).  
3. Lub pobierz aplikację „Smart Camera” na swój komputer, link do pobrania: [www.inskam.com/download/camera.zip](http://www.inskam.com/download/camera.zip)  
4. Podłącz mikroskop do portu USB 3.0 lub nowszego interfejsu za pomocą kabla Type-C dołączonego do zestawu mikroskopu, następnie przytrzymaj powrót i kliknij przycisk „KAMERA USB” w celu uruchomienia urządzenia.  
5. Zalecane jest używanie różnych systemów Windows innego oprogramowania, prosimy o pobranie odpowiedniego oprogramowania, które będzie używane zgodnie z systemem.

**Wprowadzenie trybu**

1. W przypadku systemów Windows XP/7/8/10/11 lub nowszych, pobierz i zainstaluj oprogramowanie „AMCAP” na swój komputer, link do pobrania: [www.inskam.com/download/camera.zip](http://www.inskam.com/download/camera.zip)  
2. W przypadku systemów Windows 10/11 wyszukaj oprogramowanie bezpośrednio „Kamera Windows” (Uwaga: wyłącz domyślny laptop aparat w Windowsie! Musisz także zmienić ustawienia prywatności kamery, które są potrzebne, aby umożliwić dostęp do kamery).  
3. Lub pobierz aplikację „Smart Camera” na swój komputer, link do pobrania: [www.inskam.com/download/camera.zip](http://www.inskam.com/download/camera.zip)  
4. Podłącz mikroskop do portu USB 3.0 lub nowszego interfejsu za pomocą kabla Type-C dołączonego do zestawu mikroskopu, następnie przytrzymaj powrót i kliknij przycisk „KAMERA USB” w celu uruchomienia urządzenia.  
5. Zalecane jest używanie różnych systemów Windows innego oprogramowania, prosimy o pobranie odpowiedniego oprogramowania, które będzie używane zgodnie z systemem.

**Wprowadzenie trybu**

1. W przypadku systemów Windows XP/7/8/10/11 lub nowszych, pobierz i zainstaluj oprogramowanie „AMCAP” na swój komputer, link do pobrania: [www.inskam.com/download/camera.zip](http://www.inskam.com/download/camera.zip)  
2. W przypadku systemów Windows 10/11 wyszukaj oprogramowanie bezpośrednio „Kamera Windows” (Uwaga: wyłącz domyślny laptop aparat w Windowsie! Musisz także zmienić ustawienia prywatności kamery, które są potrzebne, aby umożliwić dostęp do kamery).  
3. Lub pobierz aplikację „Smart Camera” na swój komputer, link do pobrania: [www.inskam.com/download/camera.zip](http://www.inskam.com/download/camera.zip)  
4. Podłącz mikroskop do portu USB 3.0 lub nowszego interfejsu za pomocą kabla Type-C dołączonego do zestawu mikroskopu, następnie przytrzymaj powrót i kliknij przycisk „KAMERA USB” w celu uruchomienia urządzenia.  
5. Zalecane jest używanie różnych systemów Windows innego oprogramowania, prosimy o pobranie odpowiedniego oprogramowania, które będzie używane zgodnie z systemem.

**Wprowadzenie trybu**

1. W przypadku systemów Windows XP/7/8/10/11 lub nowszych, pobierz i zainstaluj oprogramowanie „AMCAP” na swój komputer, link do pobrania: [www.inskam.com/download/camera.zip](http://www.inskam.com/download/camera.zip)  
2. W przypadku systemów Windows 10/11 wyszukaj oprogramowanie bezpośrednio „Kamera Windows” (Uwaga: wyłącz domyślny laptop aparat w Windowsie! Musisz także zmienić ustawienia prywatności kamery, które są potrzebne, aby umożliwić dostęp do kamery).  
3. Lub pobierz aplikację „Smart Camera” na swój komputer, link do pobrania: [www.inskam.com/download/camera.zip](http://www.inskam.com/download/camera.zip)  
4. Podłącz mikroskop do portu USB 3.0 lub nowszego interfejsu za pomocą kabla Type-C dołączonego do zestawu mikroskopu, następnie przytrzymaj powrót i kliknij przycisk „KAMERA USB” w celu uruchomienia urządzenia.  
5. Zalecane jest używanie różnych systemów Windows innego oprogramowania, prosimy o pobranie odpowiedniego oprogramowania, które będzie używane zgodnie z systemem.

**Wprowadzenie trybu**

1. W przypadku systemów Windows XP/7/8/10/11 lub nowszych, pobierz i zainstaluj oprogramowanie „AMCAP” na swój komputer, link do pobrania: [www.inskam.com/download/camera.zip](http://www.inskam.com/download/camera.zip)  
2. W przypadku systemów Windows 10/11 wyszukaj oprogramowanie bezpośrednio „Kamera Windows” (Uwaga: wyłącz domyślny laptop aparat w Windowsie! Musisz także zmienić ustawienia prywatności kamery, które są potrzebne, aby umożliwić dostęp do kamery).  
3. Lub pobierz aplikację „Smart Camera” na swój komputer, link do pobrania: [www.inskam.com/download/camera.zip](http://www.inskam.com/download/camera.zip)  
4. Podłącz mikroskop do portu USB 3.0 lub nowszego interfejsu za pomocą kabla Type-C dołączonego do zestawu mikroskopu, następnie przytrzymaj powrót i kliknij przycisk „KAMERA USB” w celu uruchomienia urządzenia.  
5. Zalecane jest używanie różnych systemów Windows innego oprogramowania, prosimy o pobranie odpowiedniego oprogramowania, które będzie używane zgodnie z systemem.







