

iKoWUK

User Manual

Laser Level

Model:S-2



C \in FC RoHS FD Δ

Contact us:support@ikovwuk.com
www.ikovwuk.com

Content

Safety Notes Before Use	1
Product Overview	3
Laser Level.....	3
L-shape Bracket.....	5
Operating Modes	6
Self-leveling Mode.....	6
Manual Mode.....	7
Maintenance	8
Specification	9
18 Months Warranty	10

Safety Notes Before Use

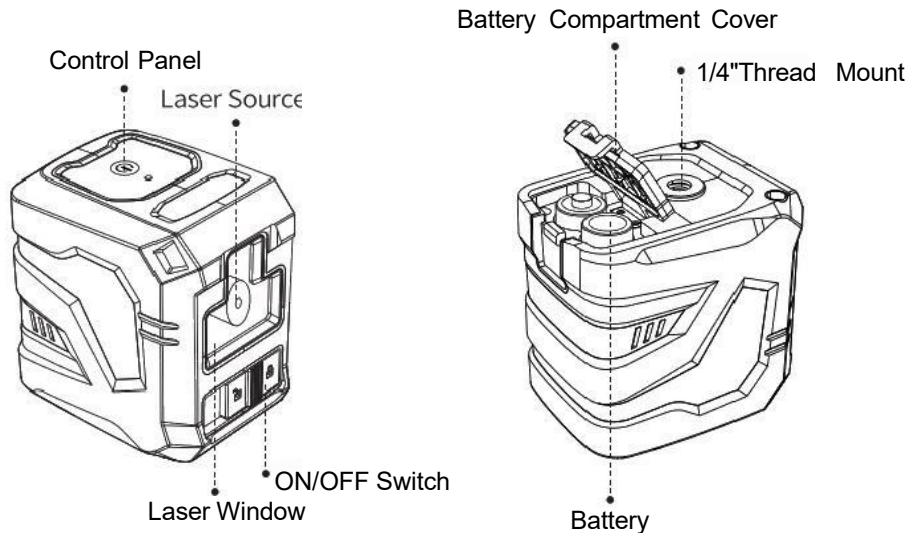
Please read this manual carefully before using the laser level and keep this manual for reference.

- Caution-Using unmentioned operating or adjusting equipment can lead to dangerous radiation exposure.
- While the laser level is in operation,be careful not to expose your eyes to the emitting laser beam.
- Do not stare directly into the laser beam or view directly with optical instruments or set up the laser at eye level.
- Do not allow children to use the laser level without supervision.They could unintentionally blind other people or themselves.
- Have the laser level repaired through qualified specialists using original spare parts.
- Do not make any modifications to the laser level.

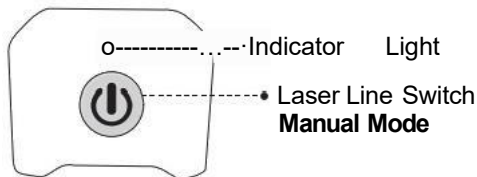
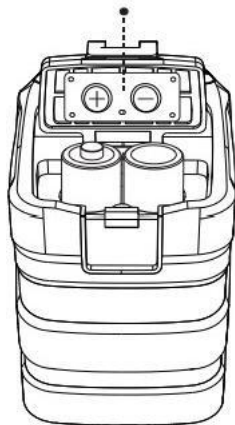
- Do not operate the laser level in an explosive environment,such as in presence of flammable liquids,gases,or dust.Sparks can be created in the laser level which may ignite the dust or fumes.
- Protect the laser level against moisture and direct sunlight.
- Do not subject the laser level to extreme temperatures or variations in temperature.
- In case of large variations in temperature,allow the laser level to adjust to ambient temperature before putting it into operation.
- It is normal for the laser level to have some reflected light when it is used on reflective surfaces such as glass or tiles.
- Do not dismantle,open or shred battery pack.Remove the battery pack from the device when not using the laser level for an extended period of time.
- Avoid heavy impact to or falling down of the laser level.
- Turn off the laser level during transport or extended periods of storage.

Product Overview

Laser Level

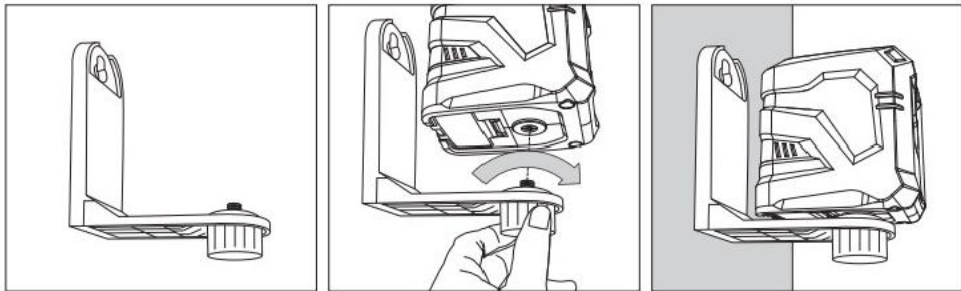


Batteries Placement Indicator



Note: When the battery power is about to run out, the indicator light will flash red, please replace the battery in time to ensure the normal work of the laser level.

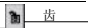
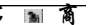
L-shape Bracket




- The L-shaped bracket is magnetic, it can be attached to any solid metal surface.
- There is a hole on the bracket that can be fixed on a non-magnetic surface with screw or nail.

Operating Modes

Self-leveling Mode

- Slide the Switch to "  ", the Self-leveling Mode is turned on, the laser lights up.
- The laser level will self-leveling within $\pm 4^\circ$, otherwise the laser beams will flashing, and the indicator flashing red light.
- Once the self-leveling is finished, the laser beams won't flash anymore, and the indicator light keep green. Press "⑩" to control the laser beams.
- Slide the Switch to "C  ", the Self-leveling Mode is turned off.

Manual Mode

- Keep the Switch"  ",press and hold the"⑩"for 3s to turn on the Manual Mode.
- In Manual Mode,the laser level won't be self-leveling,but the indicator light will flash green continuously.The level tool could be held by hand or placed on an inclined surface to project a rigid laser beam in any orientation.
- Press and hold the"①"for 3s to turn off the Manual Mode.

Maintenance

- Maintain the laser level clean after using.
- Regularly clean the surface of the laser windows,and pay attention to whether there is fluff or fiber attached to the laser windows.
- Wipe off debris using a moist and soft cloth,do not use any cleaning agents or solvents.
- Do not immerse the laser level in water or other fluids.
- Store and transport the laser level only in the supplied portable storage bag.
- If the laser level is unusable,do not open the gauge by yourself,please contact iKOVWUK support team.

Specification

Leveling accuracy	$\pm 1/8$ inch at 33 feet
Wave length (nm)	520nm
Automatic leveling range	$\pm 4^\circ$
Laser type	LD green/Cross -Line
Working range	Radius 16.4 feet (indoor)
Laser class	CLASS11, <1mW
Operating temperature	-10° °C-45°C
Storage temperature	-10°C-45°C
Protection class	Class III
Battery capacity	2*AA battery
Weight	0.46 lbs

18 Months Warranty

We are confident in our products and offer excellent and professional service to our customers. This statement is in addition to your effective rights and does not injure your statutory rights.

If there is a machine failure, iKOVWUK will provide you with a replacement service in 18 months from the date of purchase. Please:

- Provide the order ID.
- Provide video or pictures of machine failure.

Attention:

This warranty does not cover damage caused by human factors, accident, misuse of the product, unauthorized alternation to or change of parts or components of the product, or problems of power supply.

Questions or Suggestions?

Email: support@ikovwuk.com

Dear valued customers,

Thank you for choosing iKOVWUK.To ensure that you get the most out of your purchase,we have attached a QR code for the product manual and a product introduction video.With the QR code,you can easily access the manual and video online from any device.The manual provides detailed information on how to set up and use the product,while the video helps you learn how to install and use the product intuitively and quickly.

If you encounter any issues with the product,please contact our support team at support@ikovwuk.com.Our dedicated team will respond to your queries within 24 hours and work tirelessly to resolve the issue as quickly as possible.

Thank you for choosing iKOVWUK.We welcome any feedback you may have.
Best regards,

FCC conformity statement:

This device complies with part 15 of the FCC Rules. Operation is subject to the following two conditions:

(1) This device may not cause harmful interference, and

(2) this device must accept any interference received, including interference that may cause undesired operation

—The iKOWWUK team



**REGISTER NOW
18 Months
Extended Warranty**



**C How To Use
iKOVWUK Laser Level**



PDF User Manual