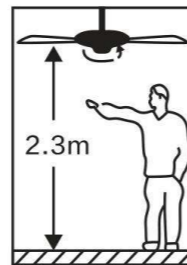
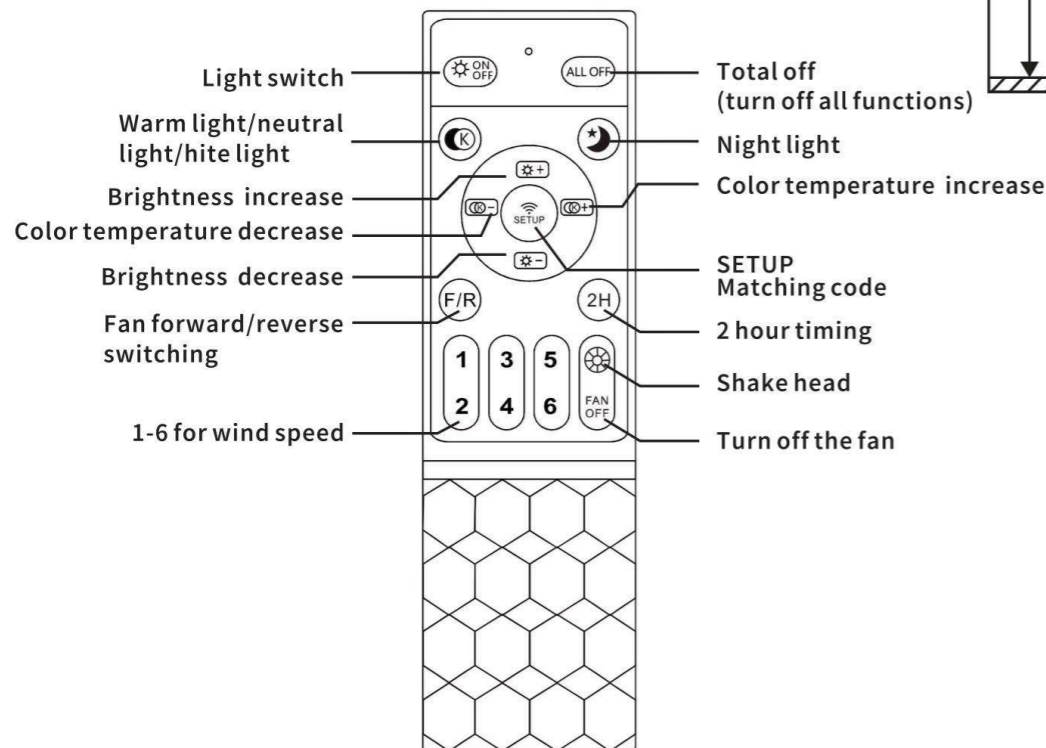


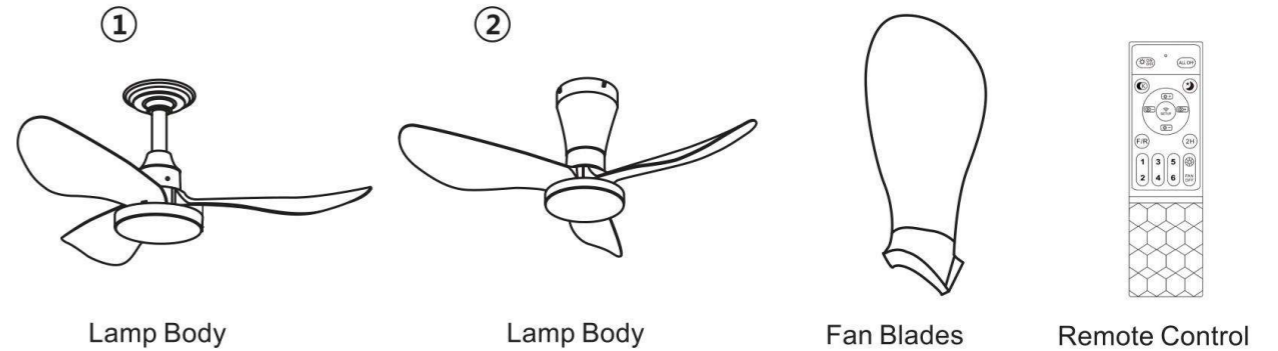
# Instruction Manual

Input Voltage	85-265V ~50/60Hz	
Wattage	1. 820X28mm	50W
	2. 820X28mm	
CCT	3000K-6500K	
Wind Speed	Soft wind/ Medium speed wind/ Strong wind	
Memory Function	YES	
Timing Function	YES	
Sudden-stop Protection	YES	
Control Mode	Remote Control / Wall Switch	

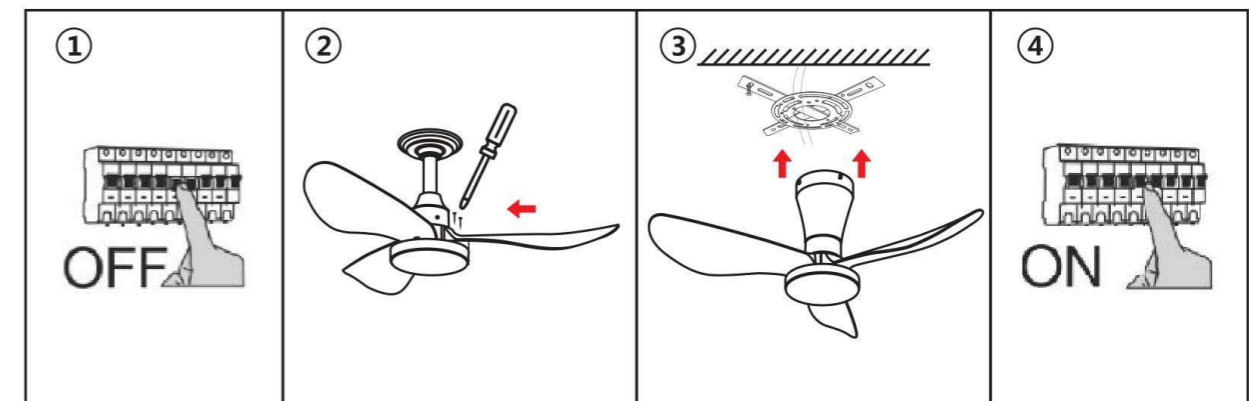
## I. Remote Control Instruction



## II. Packing List:



## III. Installation:



Step1: Make sure to cut off the power before installation.

Step2: Assemble the three blades in sequence and secure the two screws.

Step3: Secure the hanging board and fix the light securely

Step4: After Installation finished , turn on the power, you can use the fan light by remote control.

## IV. Tips

1. Even if we have a sudden stop protection , To reduce the risk of injury , Please do not put fingers or other things into the working fan blades.
2. For daily cleaning, you can use a damp cloth to wipe the surface without using corrosive chemicals.
3. The fan blades can also be disassembled directly , convenient for cleaning and storage.